

# GT1000 FREE-STANDING LATTICE TOWER

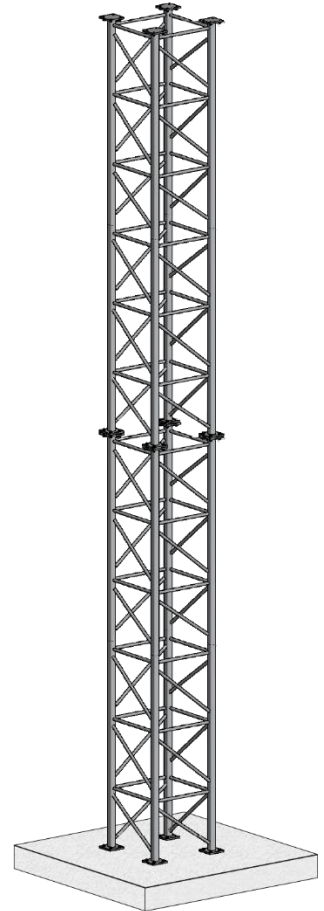
AP-FS-GT1000 FREE-STANDING TOWER, UP TO 30 METRES

## OVERVIEW

APAC's modular free-standing galvanised steel lattice towers are manufactured locally in Queensland in 6.0 metre, 350 kg sections, permitting comfortable handling during transport and assembly. The GT1000 module is a stackable design, to build towers up to 30 metres (five sections). The series' 1000 mm face width provides exceptional shear and torsional stiffness, necessary for many telecom applications. Fully-welded galvanised steel construction ensures the system can still be delivered at a low price point, but with minimal maintenance over its working life of 25 years - providing a superior total-cost-of-ownership.

GT1000 towers are a square-based (four-leg) self-supporting design, selected for minimal deflection and maximum durability in the extreme weather conditions our country faces. Ordinary free-standing galvanised towers have a tapered design, meaning final design height must be known well in advance of manufacturing, and each tower must be purchased as a single kit. GT1000 towers are designed to be manufactured and shipped as identical modules, arranged to any height as needed. The tower are ordinarily supplied in a galvanised finish, but can be supplied painted in aircraft colouring, or high visibility for mining applications.

The GT1000 series can be manufactured with mid and top-level platforms. Headframes are available to support a range of wind turbines, camera systems, radar, and telecommunications configurations.



## FEATURES

- 1000 mm face width
- 89x89 mm SHS, four-leg (square) design
- 42x4 CHS lattice webbing
- 6000 mm section length, 350 kg weight
- Hot dip galvanised to AS/NZS 4680
- Modular, buildable to heights of 6 to 30 m
- 25 year design working life

DISTRIBUTED BY

## SPECIFICATION

PARAMETER	AP-FS-GT1000
Maximum Height	30 m
Typical Footprint	1200 x 1200 mm
Design Wind Speed	70 m/s (Wind Regions A to C)
Max. Lattice Modules	5
Lattice Module Length	6000 mm
Lattice Module Width	1000 mm
Lattice Module Weight	350 kg
Module Material	Grade C350 Steel, 89x89x5.0 mm SHS legs, 42.4x4 mm CHS webbing
Lattice Finish	Hot Dip Galvanised to AS/NZS 4680
Base Plate	20 mm Mild Steel
Fixings	M20 Bolts, M24 Anchor Bolts
Class	AS3995 Class C

