

# CLIMBABLE GALVANISED ROOF MAST

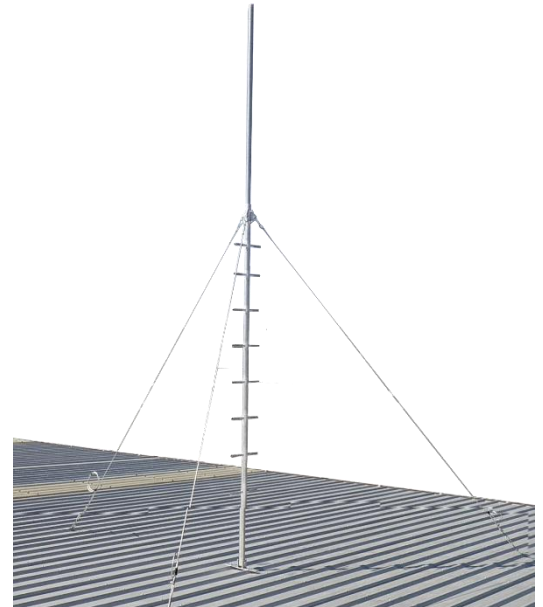
## GUYED STEEL ROOF MAST, 5 METRES

### OVERVIEW

Site engineers are often faced with the challenge of achieving sufficient height while maintaining project cost. Not all projects call for the construction of a roof mounted lattice tower, and not all building owners may permit this. APAC's climbable guyed five metre steel roof mast meets the challenge for a medium height while maintaining accessibility, allowing cameras, instruments, and antenna systems to be aligned, or more equipment added post-installation.

The split two-section design reduces shipping length under three metres, allowing transport anywhere in the globe. This clever design also allows the top section to be rotatable, permitting azimuthal adjustments post-installation, and also completely replaceable with a custom mast head such as a cluster or sector mounting frame.

Foot pegs are fully welded galvanised steel, climbable up to the three metre mark (first section) to access any equipment mounted even at the five metre mark. Being all-galvanised steel construction, this kit will last for years in the harsh Australian environment.



### FEATURES

- Climbable foot-pegs to three metres
- Five metre total height, two section design
- Galvanised 48 mm (OD) pole
- Rotatable top section with optional mast heads
- Guyed at the three metre mark for exceptional stability
- 100% Australian designed & manufactured

## SPECIFICATION

PARAMETER	
Available Heights	3.0 to 5.0 m
Installed Dimensions	5045 x 1730 mm $\varnothing$ (5.0 m mast)
Foot Plates	1x 5 mm flat bar
Weight	14 kg (5.0 m mast)
Construction	Grade C350 pipe, 48.3x2.9 mm mast, 42.4x2.65 mm top, 21.3x2 mm foot pegs
Finish	Hot dipped galvanised, Duragal to AS 4792
Guy Wire Kit	3.2 mm, Class 7x19, Grade 2070, Galvanised Steel
Fixings	2x M10 Zinc Grade 8.8 bolts

