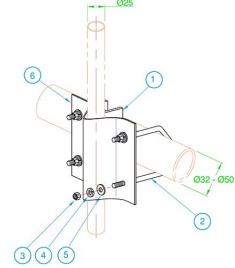
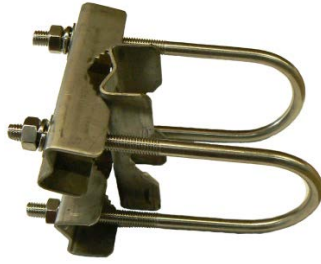
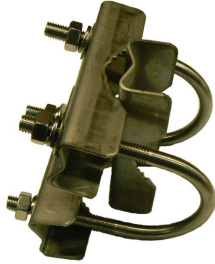


Right-angle mast mount clamps

Light to medium-duty


In-stock
Ready to
Ship
*Build to order
item



UB1-SS

Construction	304 stainless steel
Boom diameter	25mm - round
Mast diameter	38mm - round
Mounting orientation	Right-angle 90°
Service	Light to medium-duty
Weight	360grams

Recommended for stainless steel or aluminium antennas

Requires 13mm spanner for installation

UB2-SS

Construction	304 stainless steel
Boom diameter	20-50mm - round
Mast diameter	20-50mm - round
Mounting orientation	Right-angle 90°
Service	Light to medium-duty
Weight	540grams

Recommended for stainless steel or aluminium antennas

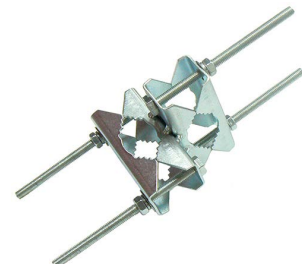
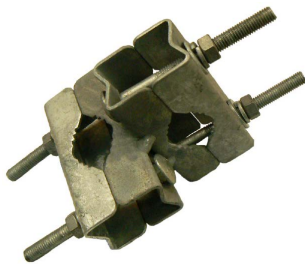
Requires 13mm spanner for installation

UB5-SS*

Construction	304 stainless steel
Boom diameter	20-32mm - round
Mast diameter	32-50mm - round
Mounting orientation	Right-angle 90°
Service	Light-duty
Weight	450grams

Recommended for lightweight antennas

Requires 13mm spanner for installation



RB8

Construction	Galvanised steel
Boom diameter	20-40mm - round
Mast diameter	20-50mm - round
Mounting orientation	Right-angle 90°
Service	Light to medium-duty
Weight	540 grams

Recommended for stainless steel or aluminium antennas

Requires 13mm spanner for installation

RB8-L

Construction	Electroplated steel
Boom diameter	20-40mm - round
Mast diameter	20-50mm - round
Mounting orientation	Right-angle 90°
Service	Light to medium-duty
Weight	200 grams

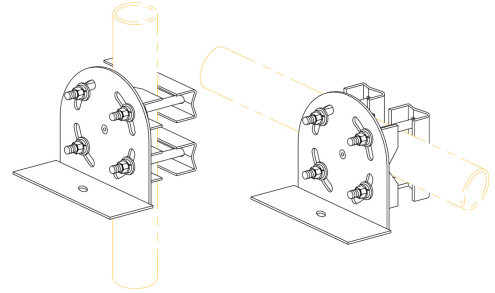
Recommended for stainless steel or aluminium antennas

Requires 13mm spanner for installation

Right-angle mast mount clamps

Light to medium-duty


In-stock
Ready to
Ship
*Build to order
item



A-1943

Construction	316 stainless steel
Boom diameter	50-60mm - round
Mount hole diameter	12mm with 6mm slot
Mounting orientation	Right-angle 90°
Service	Light to medium-duty
Weight	265grams
Recommended for vehicle mount antenna for fixed position such as GRH series	
Requires 13mm spanner for installation	

SB3

Construction	Galvanised steel
Boom diameter	20-50mm - round
Mount hole diameter	8.5mm - round
Mounting orientation	Right-angle 90° with adjustment
Service	Light-duty
Weight	400grams
Recommended for light-duty antennas	
Requires 13mm spanner for installation	