



Y715-RW & Y720-RWL

All networks 4G LTE and 4G/3G round boom Yagi
4G LTE / 4G & 3G 698-890 MHz



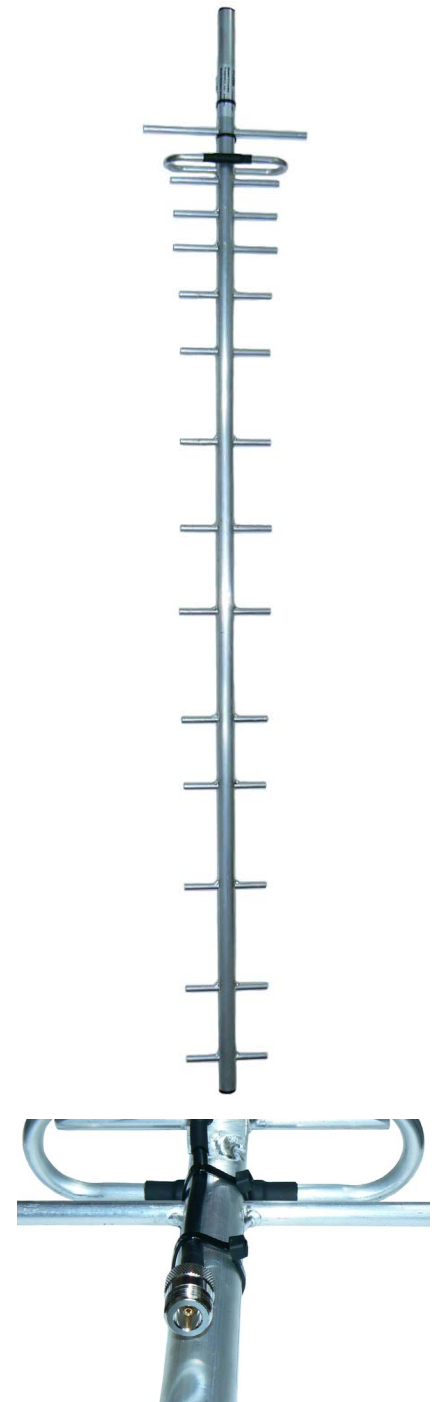
The Y715-RW 15 element and Y720-RWL round boom Yagi antennas are designed and manufactured for optimum performance across the 4G LTE and lower 4G/3G (Telstra) mobile phone frequency range 698-890MHz. Suitable for both mobile phone improvement and data transmit and receive.



Key Features:

- Wide band coverage from 698MHz to 890MHz for 4GX & 4G
- All welded construction for reliability
- Excellent front-to-back ratio
- Designed to minimize the generation of P.I.M.
- Marine Grade Aluminium
- DC Grounding

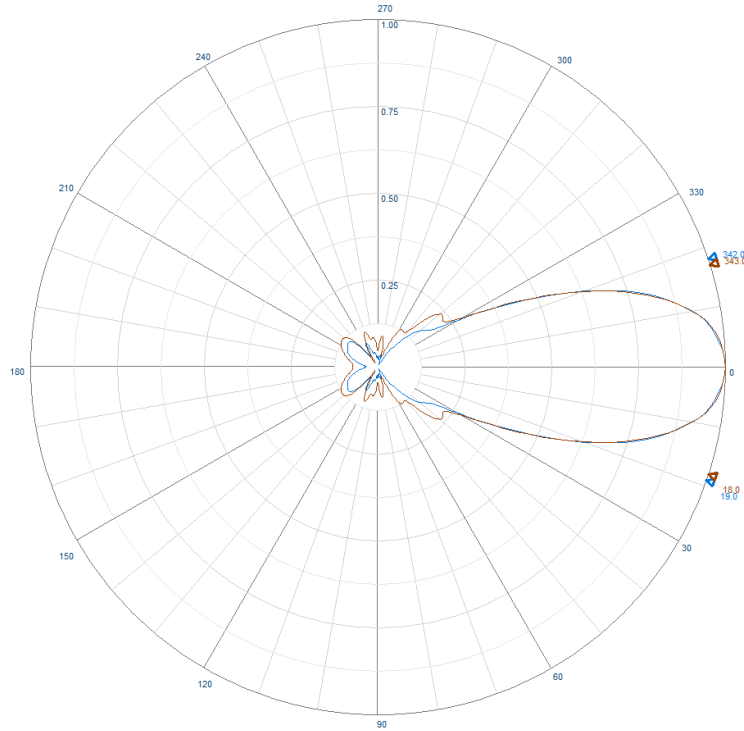
| | Y715-RW | Y720-RWL |
|----------------------------------|--|--|
| Construction | Welded corrosion resistant aluminium boom, elements and folded dipole with external cable and connector | |
| Frequency range | 698-890 MHz - All networks 4GLTE + lower 4G/3G <small>Lower 4G/3G Telstra & Vodafone - within Australia</small> | |
| Tuning | Factory | |
| VSWR | <1.8:1 across frequency range | |
| Number of elements | 15 | 20 |
| Gain - nominal | 13 dBd | |
| Polarisation | Mount horizontal or vertical as required | |
| Maximum power | 100 Watts | |
| Impedance | 50 Ohms - nominal | |
| H Plane at 3dB | 37° | 27° |
| E Plane at 3dB | 43° | 28° |
| Front-to-back ratio | 20dB | |
| Connector and cable | N-type female fitted to 115mm RG59 cable tail | N-type female fitted to 400mm external cable |
| Boom length | 1.55 metres x 25mmø | 2.36 metres x 25mmø |
| Longest element | 235mm | 214mm |
| Weight | 750grams | 1kg |
| Projected area | 0.040m ² | 0.060m ² |
| Wind load at 160kph | 0.04kN, 4.792kg | 0.071kN, 7.254kg |
| Mounting hardware order separate | 1 x RB8/RB8-L or A48-R clamp + YS1-48 strut kit | |



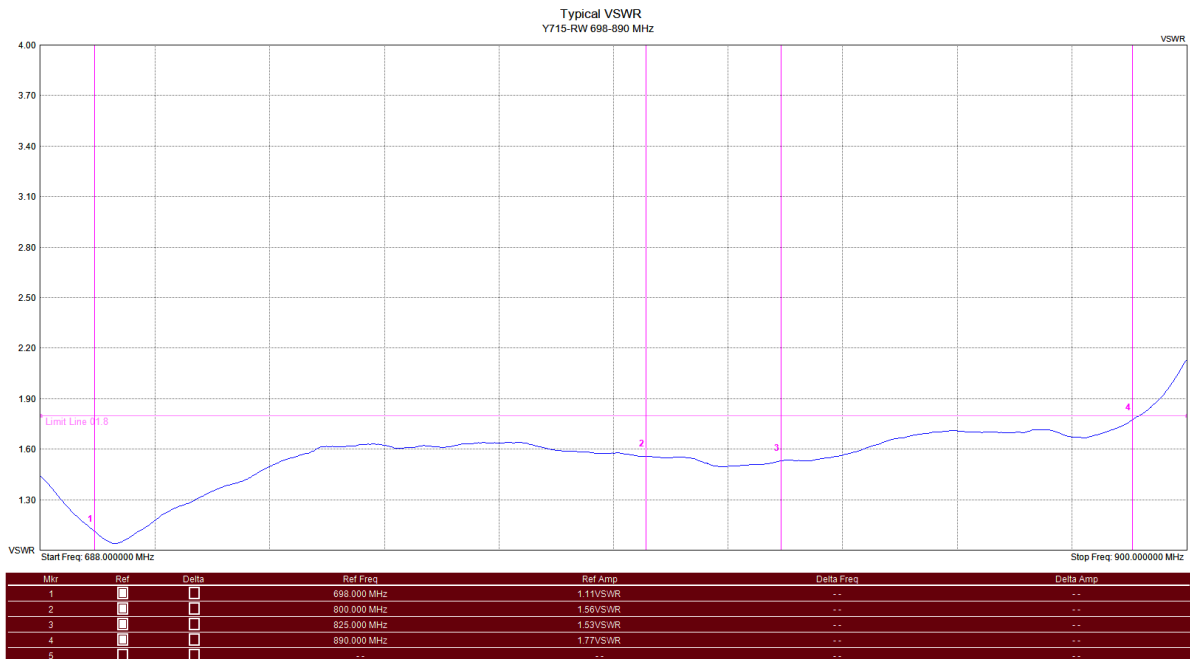


Y715-RW & Y720-RWL

All networks 4G LTE and 4G/3G round boom Yagi
4G LTE / 4G & 3G 698-890 MHz



Example radiation pattern



Typical VSWR




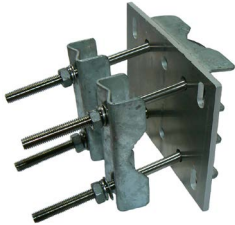
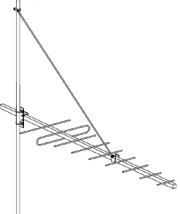
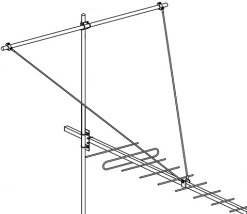


Y715-RW & Y720-RWL

All networks 4G LTE and 4G/3G round boom Yagi
4G LTE / 4G & 3G 698-890 MHz



Suitable mounting hardware

| | |
|--|--|
|  <p>CFB series - Galvanised steel 'J' hockey stick brackets, 1.1 - 2.1 metres.</p> <p>Requires A-4266 series + 2 x EB1-SS or 1 x UB2-SS</p> |  <p>SFB Series - galvanised steel pole extension 0.9-2.0 metres Roof or overhang mounting</p> <p>Requires mounting screws/ bolts and mounting hardware for antenna</p> |
|  <p>A-2654-2 - Aluminium pole extension 1.1 metres includes pole mounting brackets.</p> <p>Requires A-4266 + 2 x EB1-SS or 1 x UB2-SS</p> |  <p>A48-R galvanised steel Right-angle for 25mm round 30-50mm mount pole</p> |
|  <p>YS1-48 For 9-15 element Yagi's Single tension strut support Includes Yagi and mount pole mounting hardware. Mount pole not supplied</p> |  <p>YS2-48 For 9-15 element Yagi's Dual tension strut support Includes Yagi clamp, support boom, pole mounting hardware. Mount pole not supplied</p> |

Suitable feeder coaxial cable and connectors

| | |
|--|---|
|  <p>RG213 MIL-SPEC stranded core, solid PE dielectric core coaxial cable</p> <p>P/N 7800</p> <p>Available in 100m, 300m roll or alternatively request a custom cable assembly</p> |  <p>N-type male crimp connector for MIL-SPEC RG213 coaxial cable</p> <p>P/N 7937</p> <p>Tri-metal plated</p> |
|  <p>RU400 Solid copper conductor, low loss coaxial cable CNT-400 / LMR-400™ equivalent (* times microwave)</p> <p>P/N 7890</p> <p>Available in 100m, 300m, 500m roll or alternatively request a custom cable assembly</p> |  <p>N-type male crimp connector for RU400 low loss, solid conductor</p> <p>P/N 8226</p> <p>Tri-metal plated</p> |
|  <p>1/2" corrugated shielding, foam dielectric coaxial cable</p> <p>P/N ZCG1250</p> <p>Available in per metre, 500m roll or alternatively request a custom cable assembly</p> |  <p>N-type male clamp connector for 1/2" flexible, corrugated shielded, coaxial cable</p> <p>P/N NM1250</p> <p>Tri-metal plated</p> |