

# Directional 2x2MiMo 4G/5G Antenna

WMM2G-6-60



- 2x2 MiMo High Gain Directional Antenna for 4G/5G
- Frequency range 617-960/1710-6000MHz
- Suitable for wall or mast mounting

The WMM2G-6-60 is a high gain directional 2x2 MiMo antenna for 4G and 5G networks. It incorporates two wideband element assemblies in a single housing and is designed to support fixed site client devices. It offers 6dBi peak gain for 617- 960MHz and 9dBi peak gain for 1710-6000MHz.

The weather resistant housing is designed for wall or mast mounting with the supplied hardware.

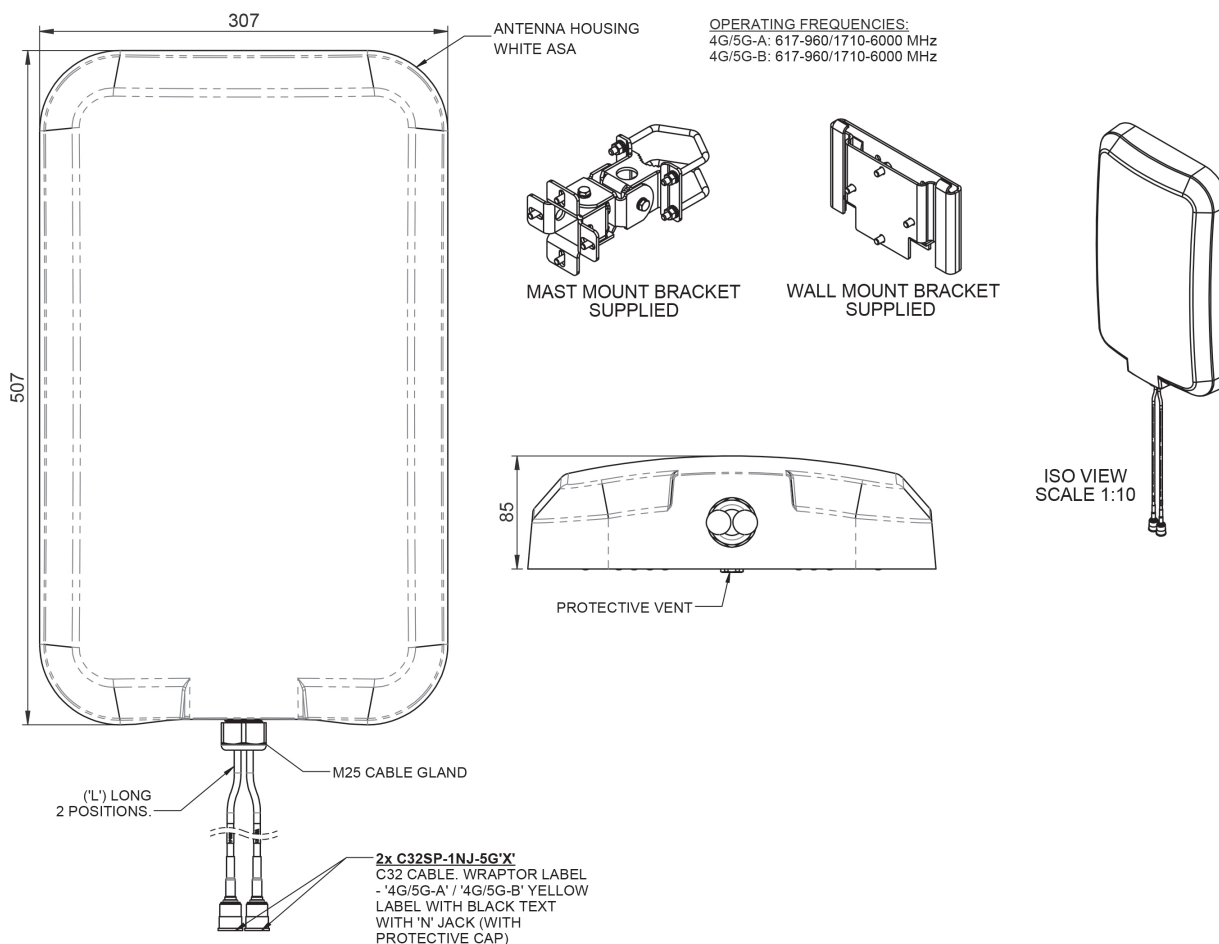
The standard WMM2G-6-60-5SP version has 5m length ultra-low loss CS32 type coaxial cables which eliminates exposed connector joints and simplifies the installation process

The WMM2G-6-60-05NJ version has 50cm length cables, fitted with N type jacks, which is ideal for installations that require a longer cable run, where Panorama's CS240 or CS400 type coaxial cable can be used to minimise the cable insertion loss.

The WMM2G-6-60 is a value added product for network operators and service providers by improving the link resilience to the router, achieving increased data rates for the subscriber, resulting in customer satisfaction and retention.

## Technical Drawing

WMM2G-6-60-05NJ Shown



# Directional 2x2MiMo 4G/5G Antenna

## WMM2G-6-60

### Product Data

Part No.		WMM2G-6-60-05NJ	WMM2G-6-60-5SP	WMM2G-6-60-5NP
<b>Electrical Data</b>				
Frequency range (MHz)		2x 617-960 / 1710-6000		
Operational bands		4G / 5G		
Radiation pattern		Directional		
Nominal polarisation		+/- 45deg / Vertical		
Peak gain (excl cable loss)*	617-960MHz	6dBi		
	1710-6000MHz	9dBi		
Efficiency - excluding cable loss (all bands)		> 60%		
Correlation co-efficient ( all bands)		< 0.2		
Max input power (W)		20 Watts		
<b>Mechanical Data</b>				
Dimensions (mm)	Height	507 (19.96")		
	Width	307 (12.01")		
	Depth	85 (3.34")		
Operating temp (°C)		-40° / +80°C (-40° / 176°F)		
Material		ASA		
Colour		White		
IP Rating		IP66		
Radome material certifications		UL94-HB, UL746C-f2		
Weight (g)		5400		
Survival wind speed (m/s)		55		
Typical wind load @ 45 m/s (N)		200		
<b>Mounting Data</b>				
Fixing		Wall Mount / Mast Mount		
Mounting bracket material		Coated steel / Aluminium / Stainless Steel		
Pole diameter (mm)		20-50 / (0.78 - 1.96")		
<b>Cable &amp; Connector Data</b>				
Cable Type		CS32 FRZH   (Meet EN6722 / EN45545-2)		
Diameter (mm)		5 (0.2")		
Length (m)		0.5m (19")	5 (16.4')	5 (16.4')
Connector		N Socket (f) x2	SMA(m) x 2	N-Plug (m) x2

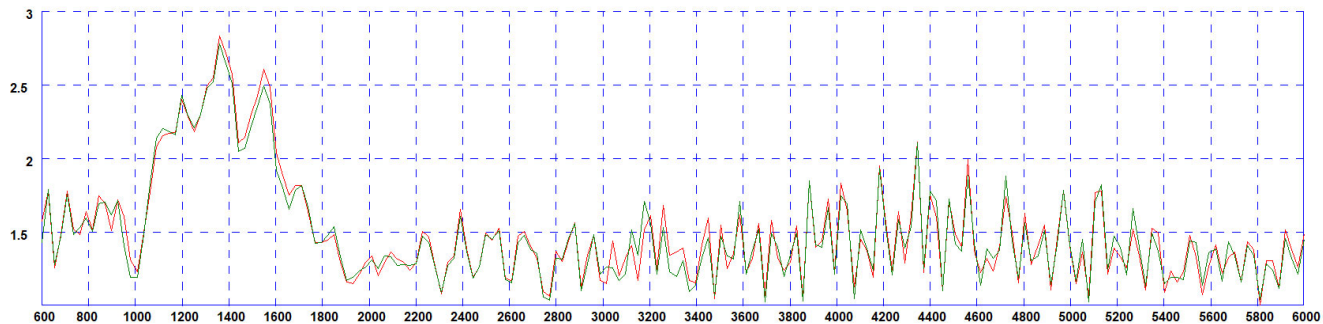
\* Peak gain derived from CST Microwave Studio and excludes cable

# Directional 2x2MiMo 4G/5G Antenna

WMM2G-6-60

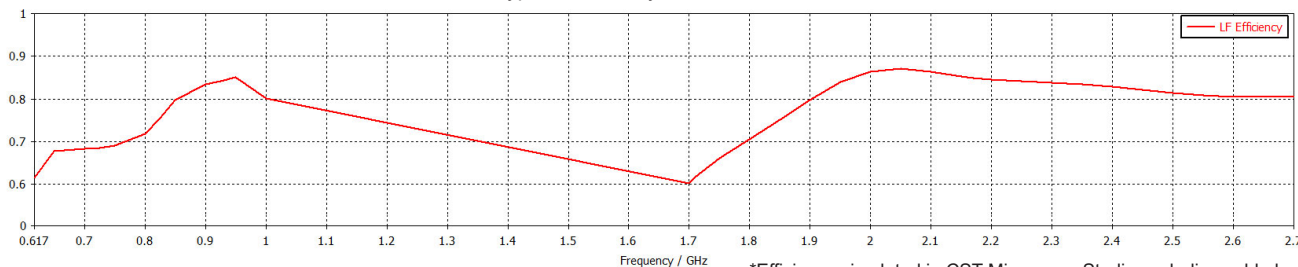
## Electrical Data

Typical VSWR\*



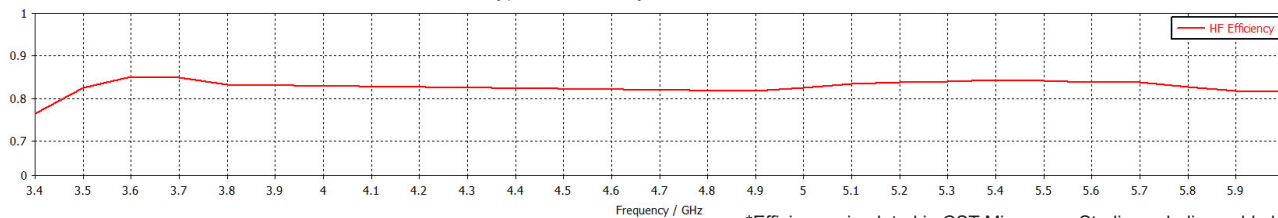
\*VSWR for elements assemblies 1 and 2 measured with 5m (16') of CS32 cable.

Typical Efficiency 617-2700MHz\*



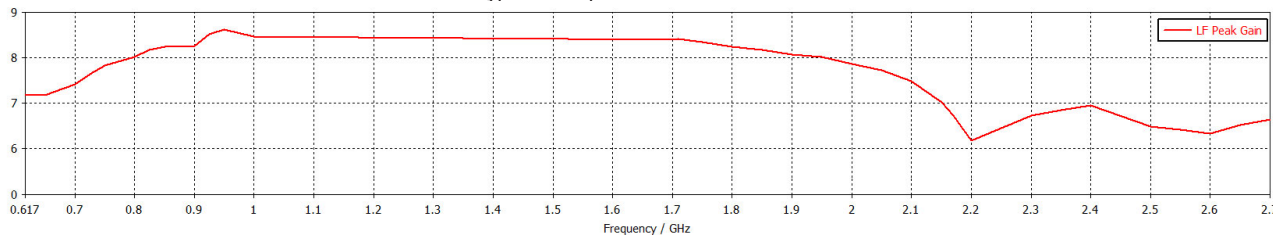
\*Efficiency simulated in CST Microwave Studio excluding cable loss.

Typical Efficiency 3400-6000MHz\*



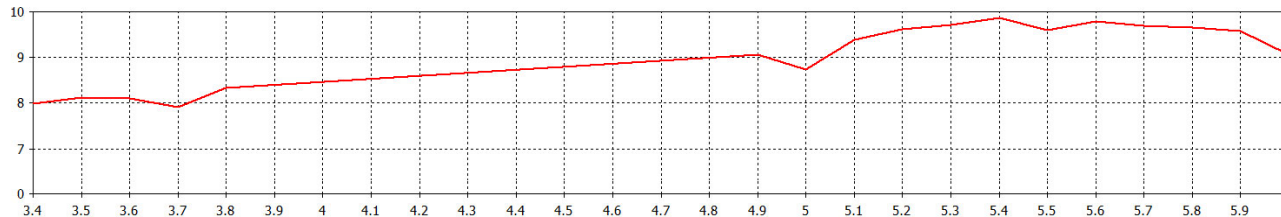
\*Efficiency simulated in CST Microwave Studio excluding cable loss.

Typical Swept Gain 617-2700MHz\*



\*Swept gain simulated in CST Microwave Studio excluding cable loss.

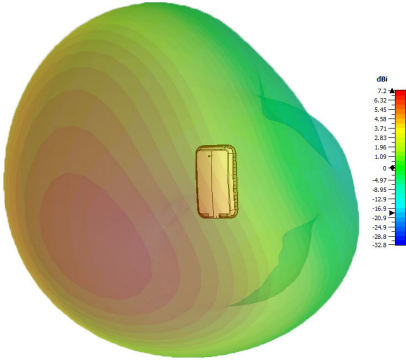
Typical Swept Gain 3400-6000MHz\*



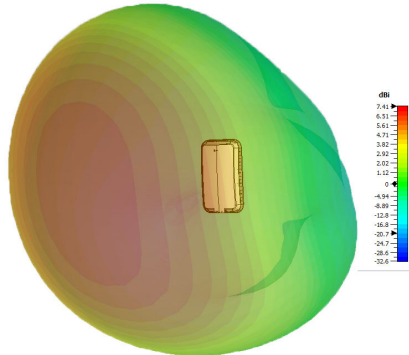
\*Swept gain simulated in CST Microwave Studio excluding cable loss.

3D Patterns

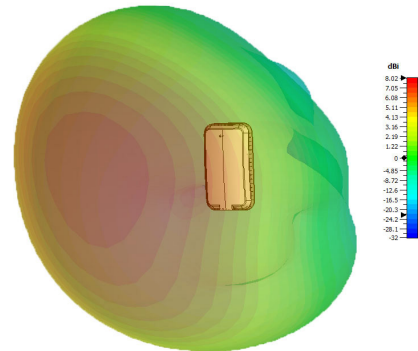
Typical 3D Pattern 617MHz\*



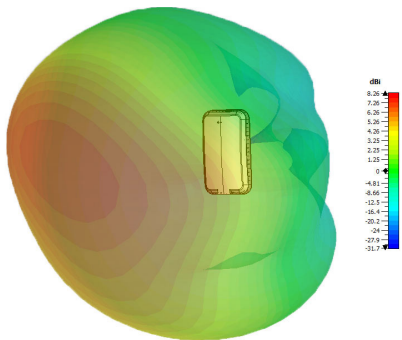
Typical 3D Pattern 700MHz\*



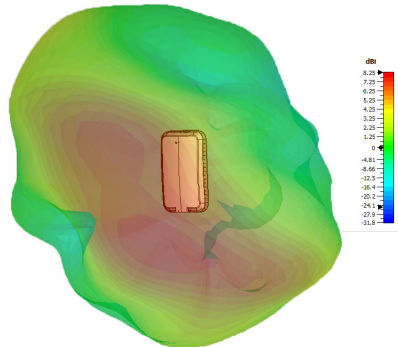
Typical 3D Pattern 800MHz\*



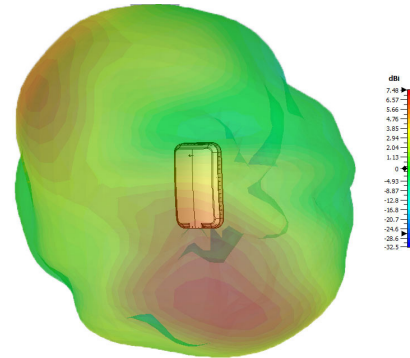
Typical 3D Pattern 900MHz\*



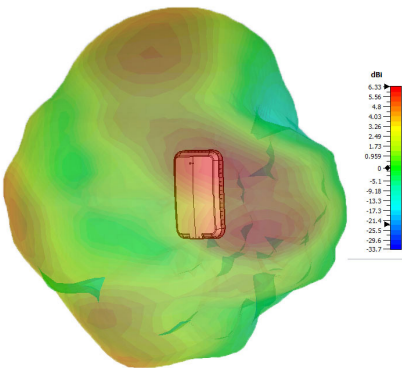
Typical 3D Pattern 1800MHz\*



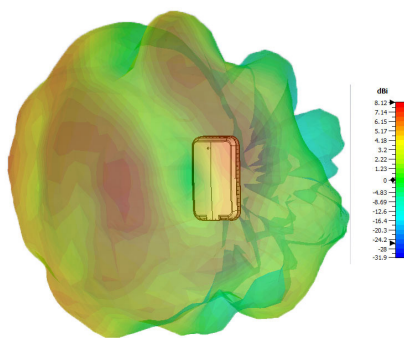
Typical 3D Pattern 2100MHz\*



Typical 3D Pattern 2600MHz\*



Typical 3D Pattern 3600MHz\*



Typical 3D Pattern 5600MHz\*

