



Reyee RG-R4

1800M Gigabit Dual-Band

Wi-Fi 6 Wireless Router



For more information, please check: www.ireyee.com
Technical Support: www.ireyee.com/support

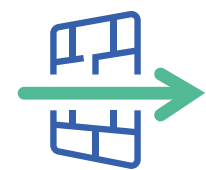
Product Overview

RG-R4 is a Wi-Fi 6 Gigabit Dual-Band Wireless Router designed for large flat floors, homes, villas, small shops, SOHO, and similar scenarios. It is designed to provide next-generation high-quality Wi-Fi services. Additionally, this router is equipped with four independent power amplifiers for boosting signal strength, allowing a coverage of twice the distance compared to previous routers.

RG-R4 provides one 10/100/1000 Mbps WAN port and two 10/100/1000 Mbps LAN ports, with a maximum access bandwidth of 1000Mbps. The router supports the new-generation Wi-Fi 6 standard at both 2.4 GHz and 5 GHz. The maximum wireless rate is 574 Mbps at the 2.4 GHz, 1201 Mbps at the 5 GHz, and can reach 1775 Mbps in concurrent rate.

Reyee Mesh technology enables quick connection among multiple Reyee routers without cable or configuration. With this technology, Wi-Fi signals can cover entire large flat floors, complex units, duplexes, and villas. In addition, it supports hybrid mesh networking with whole Reyee router family. The RF adjustment algorithm applied to millions of Reyee enterprise-grade access points (APs) can provide seamless roaming among devices. Users can move around the Wi-Fi coverage area without service interruption.

RG-R4 supports local and remote management platforms, web-based mode and Reyee Router App. This wireless router also provides multiple functions related to home care, including Parental Control, Health Mode, Xpress Mode, and more. It is exclusively designed for a Smart Home System, meeting the needs of all household scenarios.



Strong Signals Across Walls
Signal Visualization



Matrix Antenna System
3D Signal Coverage



One-Click Reyee Mesh
Whole Family Wi-Fi



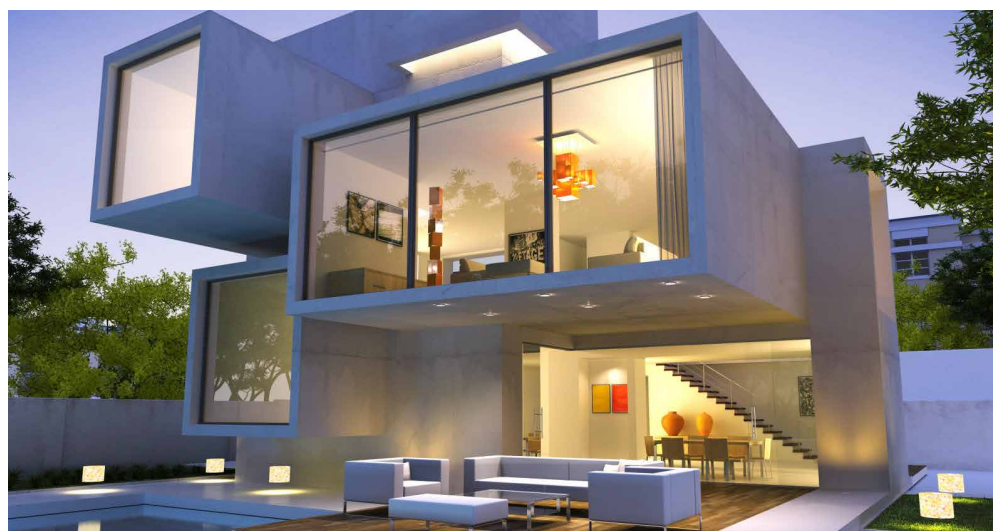
RG-R4 1800M Gigabit Dual-Band Wi-Fi 6 Wireless Router

Product Features



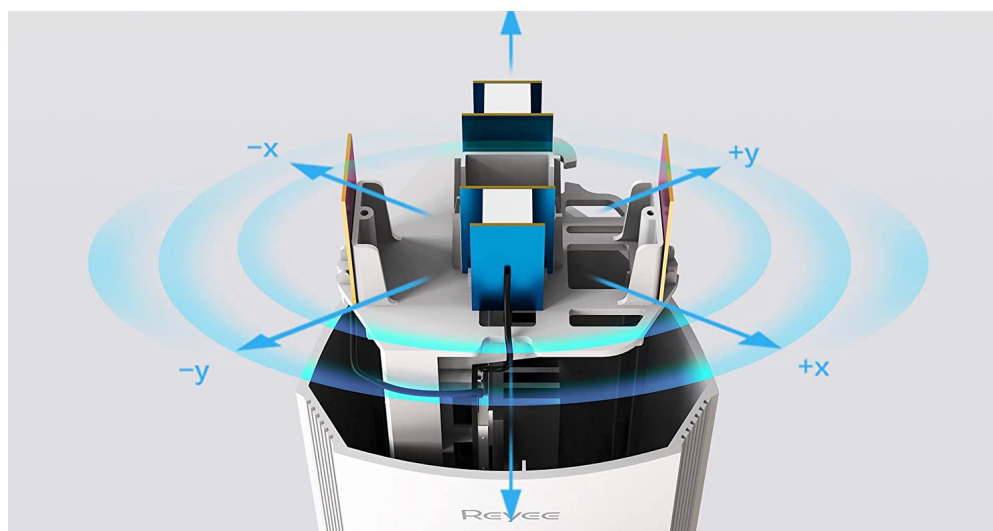
An Unprecedented Wireless Experience in Wi-Fi 6

The state-of-the-art Wi-Fi 6 standard is supported at both 2.4 GHz and 5 GHz. With the advanced 1024-Quadrature Amplitude Modulation (QAM) technology of Wi-Fi 6, which allows extremely fast wireless connections, wireless speed is 1.5X faster than Wi-Fi 5 routers. Keeping pace with bandwidth upgrades and the growing popularity of Wi-Fi 6 terminals, this router provides powerful dual-core processing capabilities and intelligent hardware Network Address Translation (NAT) to further accelerate wireless access.



Penetrating Walls Easily via Stronger Signal

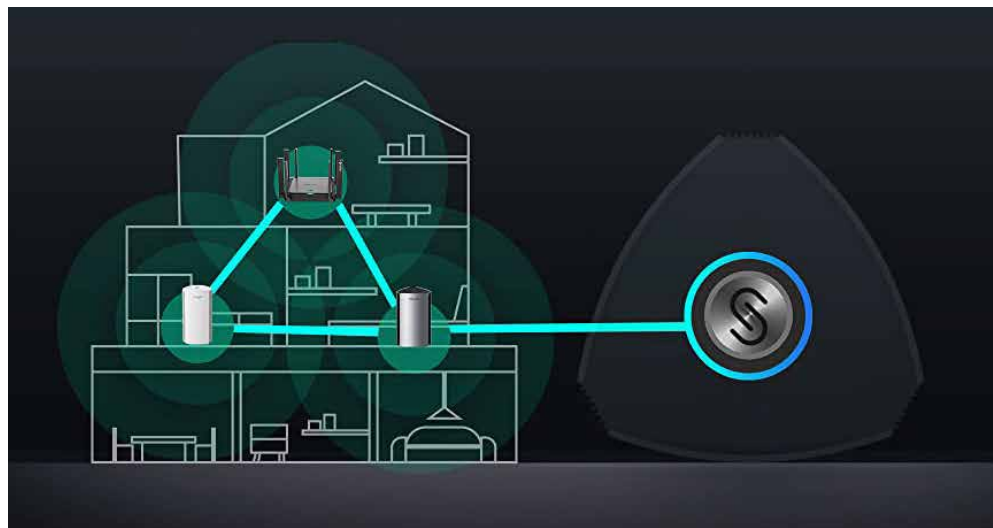
RG-R4, for 2.4 GHz and 5 GHz, both equipped with two independent high-performance signal amplifiers(FEM) relatively. The signal coverage performance is increased by 50%, and the Internet experience at 5 GHz is barely affected even across walls within the range of home*.



Customized Matrix Antenna System

RG-R4 uses innovative two-axis antennas at 2.4 GHz and 5 GHz, together with four two-way signal amplifiers to enrich the extensive experience of Wi-Fi 6 features. In this way, signals in both horizontal and vertical directions are enhanced to realize full space coverage.

Product Features



One-Click Reyee Mesh for Seamless Roaming and Easy Wi-Fi Extension

Reyee Mesh is a self-developed networking technology for whole family Wi-Fi solution, which supports both wired connection and the One-Click wireless pairing mode. You can click the Reyee Mesh button to complete the pairing process of multiple devices with zero configuration. Reyee Mesh supports the wired bridge, wireless bridge, and hybrid bridge modes.

Terminals such as mobile phones can automatically switch and seamlessly roam between connected routers in the same mesh network. Keep your whole family network uninterrupted while walking around different areas.



Parental Control Functions

The router supports the control of Internet accessing behaviors based on applications and time. Parents can set rules to limit Internet access time for specific terminals. This router allows parents to remotely plan study time and Internet use for their children.

Hardware Specifications

Wireless Parameters

- 2.4 GHz, 2x2, maximum rate of 574 Mbps
- 5 GHz, 2x2, maximum rate of 1201 Mbps
- Four built-in omnidirectional antennas
- 802.11a/b/g/n/ac/ax and DL/UL MU-MIMO
- Independent 2.4 GHz and 5 GHz mode and dual-band mode
- Beamforming, OFDMA, and BSS color technologies

Ports

- One 10/100/1000M adaptive WAN port (auto MDI/MDIX)
- Two 10/100/1000M adaptive LAN ports (auto MDI/MDIX)
- One power input port



Buttons

- One Reyee Mesh key
- One system reset key

Indicators

- One signal visualizing Indicator
- One system & Mesh LED indicator

Physical Structure

- Dimensions: 91.5 mm × 91.5 mm × 180.6 mm
- Weight: 0.65 kg (including the package)

Power Supply

- Power specifications: DC 12 V, 1.5 A
- Maximum power: < 18 W

Certifications

- FCC, IC, RoHS, cTUVus, CE

Operating Environment

- Operating temperature: -10°C to +45°C
- Storage temperature: -40°C to +70°C
- Operating humidity: 5% to 95% (non-condensing)
- Storage humidity: 5% to 95% (non-condensing)

Software Parameters

Main Features

- PPPoE, DHCP, static IP address for Internet access
- Acquisition of PPPoE accounts from routers of earlier versions
- Dual-band mode
- 5 GHz Bandsteering
- Power adjustment
- Automatic channel adjustment
- Guest Wi-Fi
- Rate limiting for terminal IP addresses
- Static DHCP address
- Virtual server
- DDNS
- DMZ
- UPnP

Management modes

- Local Web mode
- App: iOS edition and Android edition

Advanced Features

- Reyee Mesh: Connects multiple devices into a mesh with zero configuration, supports automatic wired and wireless switching between multiple devices, and supports cross-model networking.
- Wireless roaming
- Hardware NAT
- One-click network optimization
- Fault diagnostics
- Remote maintenance on the cloud
- Auto and manual software upgrade on the cloud

Network Security

- WPA-PSK/WPA2-PSK encryption
- SSID hiding
- Wi-Fi squatter prevention (blacklist)
- Internet access control
- Firewall



RG-R4 1800M Gigabit Dual-Band Wi-Fi 6 Wireless Router

Other Information

Others

- Built-in antennas
- Enterprise-grade chip solution
- Gigabit broadband access
- Dual-core four-thread CPU
- Support for hardware NAT
- Concurrent access up to 48 (recommended) terminals
- Wireless access: Dual-band 1775 Mbps
- Wired access: 3 Gigabit ports, including 1 WAN port and 2 LAN ports
- Support for the latest 802.11AX standard
- Exclusive Reyee Mesh technology
- Wi-Fi seamless roaming
- 2+2 independent high-performance signal amplifiers
- Multiple management modes.