

deco™ | AX3600 Tri-Band
Mesh Wi-Fi 6 System



AX3600 Tri-Band Mesh Wi-Fi 6 System

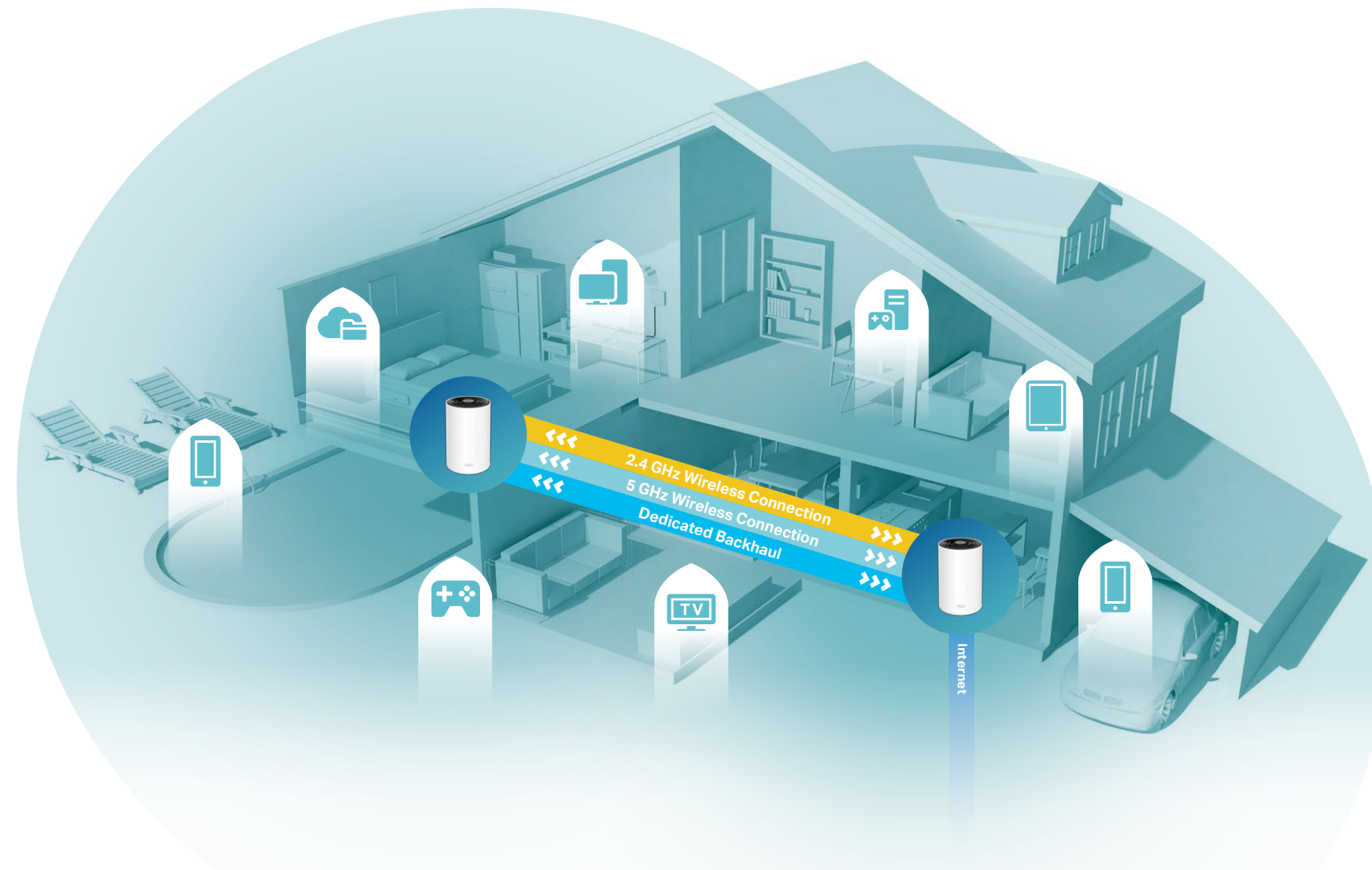
Superior Mesh Wi-Fi, Everywhere



Deco X68



Highlights



Improved Capacity for More Connections



Unrivaled Wi-Fi 6 Speeds up to 3600 Mbps[†]



Immersive Streaming, No More Buffering



Tri-Band with Dedicated Backhaul

The Tri-Band Wi-Fi provides an extra 5 GHz band working exclusively as the strong backhaul between deco units. This creates seamless coverage with clearer, stronger whole home Wi-Fi.



Seamless Roaming with One Wi-Fi Name

Deco units work together to form a unified network with a single network name. Walk through your home and stay connected with the fastest possible speeds.[‡]



TP-Link HomeShield

TP-Link's premium security services keep your home network safe with cutting-edge features for network and IoT protection.*



Network Protection

Detect cyber threats to keep your privacy and connected devices well protected.



Parental Controls

Manage online time and block inappropriate content to keep families healthy online.



Quality of Service (QoS)

Prioritize your bandwidth needs to get a faster networking experience.



Comprehensive Reports

Gain full statistics and insights to help you know your home network better.

Features



Robust Parental Controls

Manage content and control when each device can access the internet

- **Profiles** – Create a profile for each family member, and manage them individually
- **Content Filter** – Four levels are available for filtering content, each catering to a specific age group
- **Time Controls** – Set daily time limits for the total time spent online and block a person's internet access between certain times
- **Pause the Internet** – Pause a family member's internet and resume it whenever you like



Easy Setup by Deco App

Easily set up Decos and find the ideal spot to place each unit

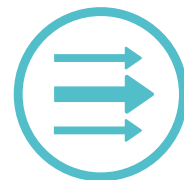
- **Auto Connection Test** – Test the internet connection of your Decos and helps to identify a suitable location for them
- **Remote Management** – Manage your Deco network from a smartphone or tablet via the app, no matter where you find yourself
- **Online Upgrade** – Keep informed of the latest firmware updates



Built-In Antivirus

Protect all connected devices in your home from viruses and malware

- **Malicious Content Filter** – Block malicious websites that are listed in real-time updated database to ensure you can surf the net in safety
- **Intrusion Prevention System** – Protect your network and applications against external attacks and eliminates vulnerabilities
- **IoT Devices Protection** – Detect cyber threats to keep your privacy and IoT devices well protected



Quality of Service

Prioritize devices and applications for faster performance when needed

For Devices – Give high priority to the devices that need the fastest internet connection



Security

Safeguard your home network with a firewall and wireless encryption

- **Encryption for Secure Network** – WPA/WPA2/WPA3 encryptions provide active protection against security threats
- **Firewall** – Protect your network devices from malicious attacks
- **Blacklist** – Add specific devices to blacklist to protect your network from unauthorized users



Work with All Deco Models

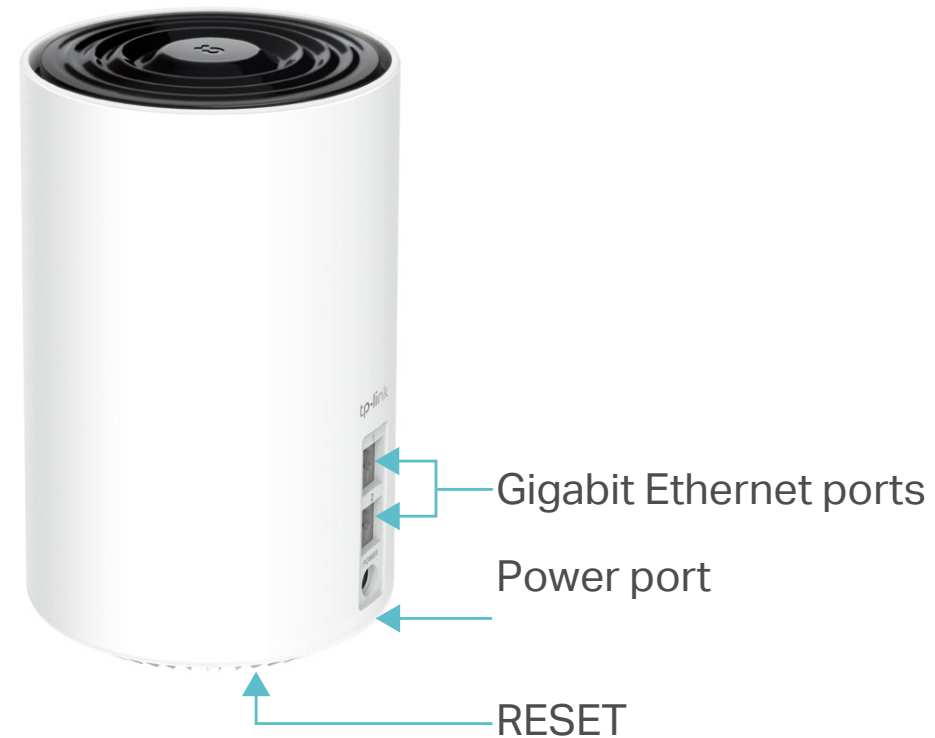
Form a Mesh network with your desired Deco models

All Deco models can work together. Just expand Mesh Wi-Fi coverage anytime by adding more Decos

Specifications

Hardware

- Ethernet Port: 2 gigabit ports per Deco unit (WAN/LAN auto-sensing)
- Button: 1 RESET button on the underside
- Antenna: 5 high-gain antennas
- Power Consumption (with power adapter): 30 W max
- Dimensions (W × D × H): 4.1 × 4.1 × 6.7in (105 × 105 × 169 mm)
- Power Adapter Input: 100-240 V ~ 50/60 Hz 0.8 A
- Power Adapter Output: 12 V = 2.5 A



Wireless

- Wireless Standards: IEEE 802.11a/n/ac/ax 5 GHz, IEEE 802.11b/g/n/ax 2.4 GHz
- Mesh protocol: 802.11k/v/r
- Frequency: 2.4 GHz and 5 GHz
- Signal Rate: 1802 Mbps on 5 GHz (1) + 1201 Mbps on 5 GHz (2) + 574 Mbps on 2.4 GHz[†]
- Transmit Power: FCC: <30 dBm(2.4 GHz), <30 dBm(5 GHz)
CE: <20 dBm (2.4 GHz), <30 dBm (5 GHz)
- Wireless Security: WPA/WPA2-PSK/WPA3 encryptions

Software

- Working Mode: Router, Access Point
- WAN Type: Dynamic IP/Static IP/PPPoE/L2TP/PPTP
- DHCP: Server
- Protocols: Supports IPv4 and IPv6
- Guest Network: 2.4 GHz Guest Network×1, 5 GHz Guest Network×1
- Features: TP-Link HomeShield, BSS Color[^], OFDMA[^], 1024-QAM[^], MU-MIMO[^], Optional Ethernet Backhaul, Assisted Setup, Address Reservation, Port Forwarding, TP-Link DDNS, IPTV, IPv6, Firewall Rules, LED Control
- Management: Local Management; Remote Management; Multi-Managers

Others

- Certification: CE, EAC, FCC, IC, RoHS, RCM, JPA, JRF, VCCI
- Smartphone/Tablet Requirements: iOS 9.0 or later, Android 4.4 or later
- Environment:
Operating Temperature: 0°C~40°C (32 °F~104 °F)
Storage Temperature: -40°C~60°C (-40 °F~140 °F)
Operating Humidity: 10%~90% RH
Storage Humidity: 5%~90% RH
- Package Contents for Deco X68(1-pack):
1 Deco X68 unit
1 RJ45 Ethernet cable
1 Power adapter
1 Quick Installation Guide
- Package Contents for Deco X68(2-pack):
2 Deco X68 units
1 RJ45 Ethernet cable
2 Power adapters
1 Quick Installation Guide
- Package Contents for Deco X68(3-pack):
3 Deco X68 units
1 RJ45 Ethernet cable
3 Power adapters
1 Quick Installation Guide

Attention: this device may only be used indoors in all EU member states and EFTA countries.

This device complies with part 15 of the FCC Rules. Operation is subject to the following two conditions: (1) This device may not cause harmful interference, and (2) this device must accept any interference received, including interference that may cause undesired operation.

Specifications are subject to change without notice. All the brands and product names are trademarks or registered trademarks of their respective holders.

[†]Maximum wireless signal rates are the physical rates derived from IEEE Standard 802.11 specifications. Actual wireless data throughput and wireless coverage, and quantity of connected devices are not guaranteed and will vary as a result of network conditions, client limitations, and environmental factors, including building materials, obstacles, volume and density of traffic, and client location.

[^]Clients need to support 802.11k/v/r and may require additional setup. Performance may vary depending on the client device.

[^]Use of Wi-Fi 6 and features including OFDMA, MU-MIMO, 1024-QAM, and BSS Color require clients to also support the corresponding features.

^{*}HomeShield includes the Free Basic Plan. Fees apply for the Pro Plan. Visit tp-link.com/homeshield for more information.

©2020 TP-Link

www.tp-link.com

TP-Link AX3600 Tri-Band Mesh Wi-Fi 6 System Deco X68