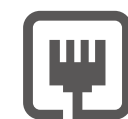




# AC1200 Wireless VDSL/ADSL Modem Router

Four Antennas for Faster AC  
Wi-Fi and Greater Coverage

Archer VR300



VDSL/ADSL/Fiber/  
Cable Compatible



300Mbps + 867Mbps  
Dual Band Wi-Fi





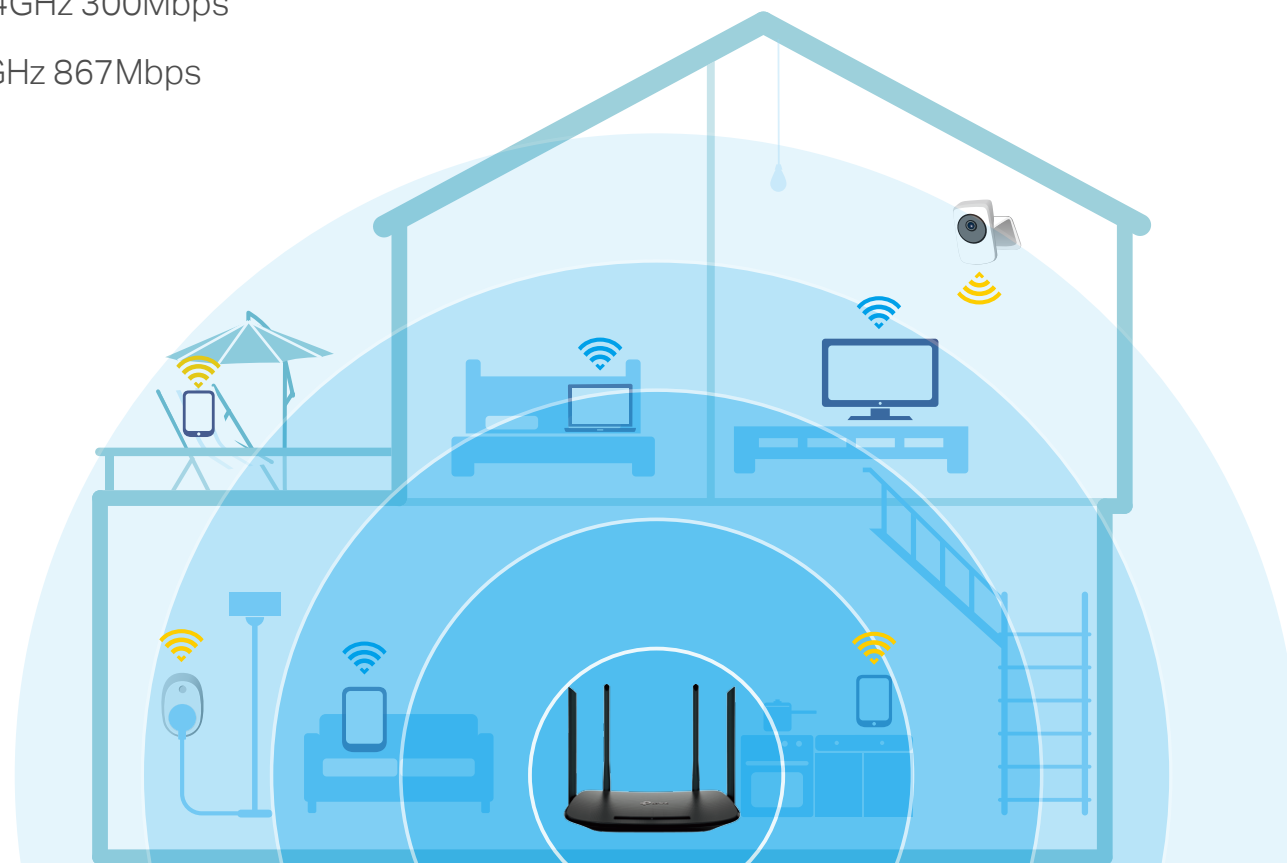
4 × 5dBi Antenna

# Highlights

## Upgrade Your Home Entertainment

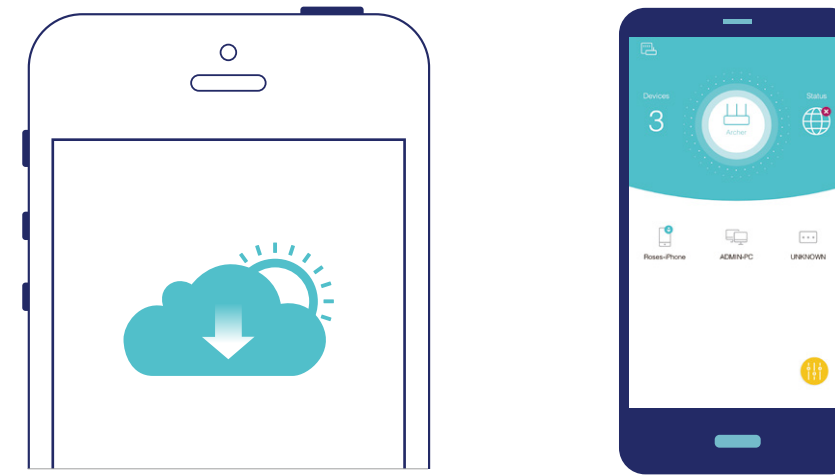
The Archer VR300 unlocks the full potential of your internet connection by providing combined dual band Wi-Fi speeds of up to 1.2Gbps and impressive broadband speeds of up to 100Mbps, helping all your devices reach peak performance.

-  2.4GHz 300Mbps
-  5GHz 867Mbps



## TP-Link Cloud Service

TP-Link Cloud service helps you easily manage your home network when you are out and about via the Tether app on your smartphone or tablet, keeps you informed of the latest firmware updates, and allows you to manage multiple TP-Link Cloud devices from a single TP-Link ID.

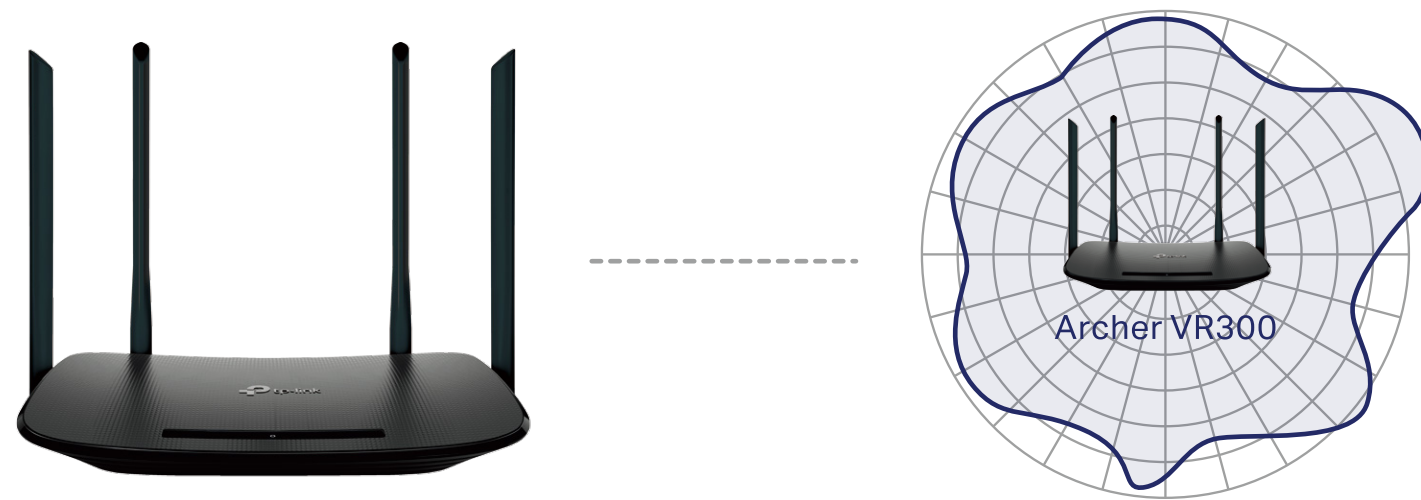


TP-Link Tether

# Highlights

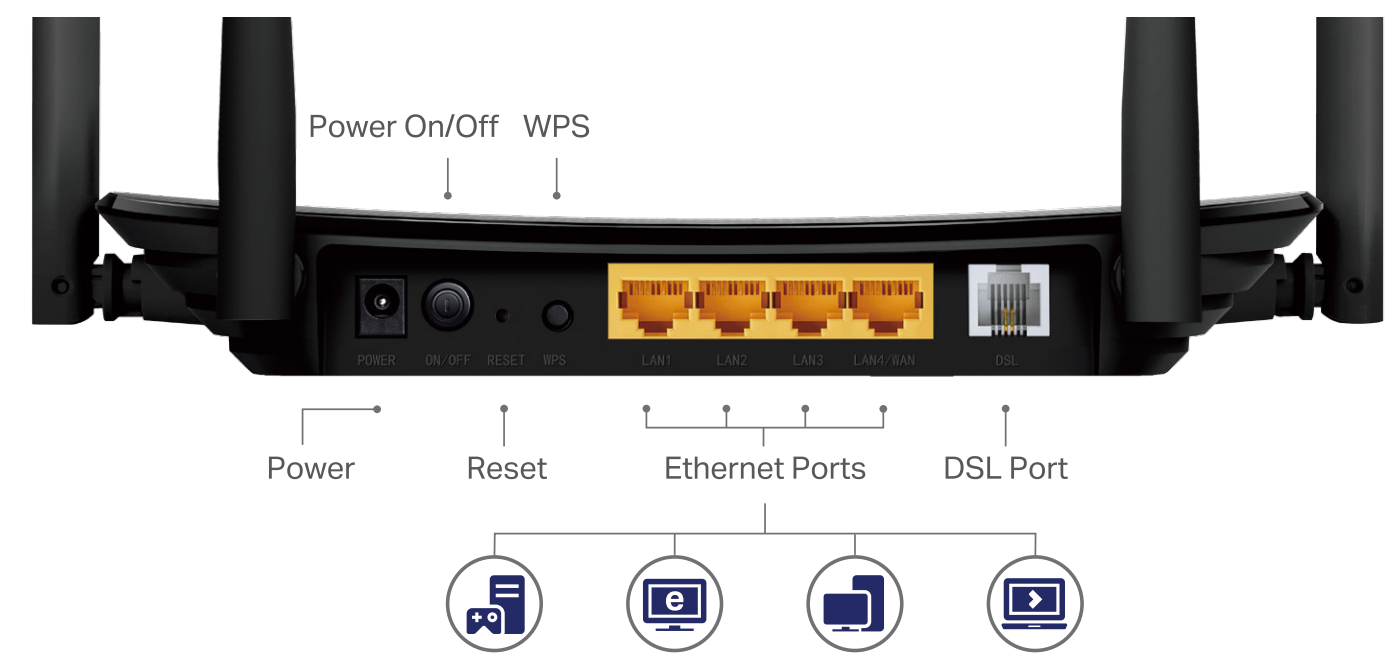
## Superior Coverage

Four 5dBi high-gain antennas provide superior Wi-Fi coverage all across your home.



## Versatile Connectivity

With multiple inputs, the Archer VR300 provides you with a variety of internet connection options. As a backup, the LAN/WAN port accepts connections from Cable Modem or Fiber Modem via Ethernet cable.

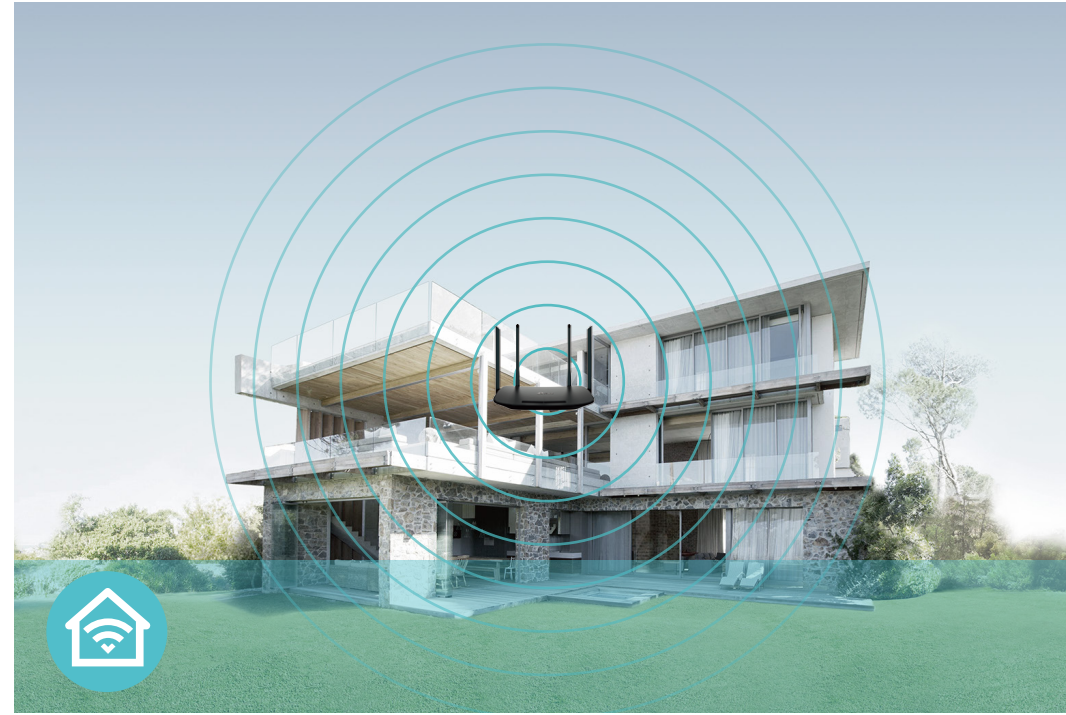


# Features



## Speed

- **Ultimate Wireless Speed** – Combined wireless speeds of up to 300 Mbps (over 2.4GHz) and 867 Mbps (over 5GHz)
- **802.11 ac** – Provides a data transfer rate 3 times faster than 802.11n for each stream
- **Fast Ethernet Ports** – Fast Ethernet ports for rapid, reliable wired connections to computers, TVs and game consoles



## Wi-Fi Range

- **Superior Coverage** – Four 5dBi high-gain antennas provide superior Wi-Fi coverage all across your home.
- **Omni-directional Antennas** – Omni-directional antennas ensure widespread Wi-Fi coverage and a stable connection



## Reliability

- **Dual Band** – Separate Wi-Fi bands enable more devices to connect to your network without a drop in performance
- **Bandwidth Control** – IP-based Bandwidth Control makes it easier for you to manage the bandwidth of connected devices

# Features



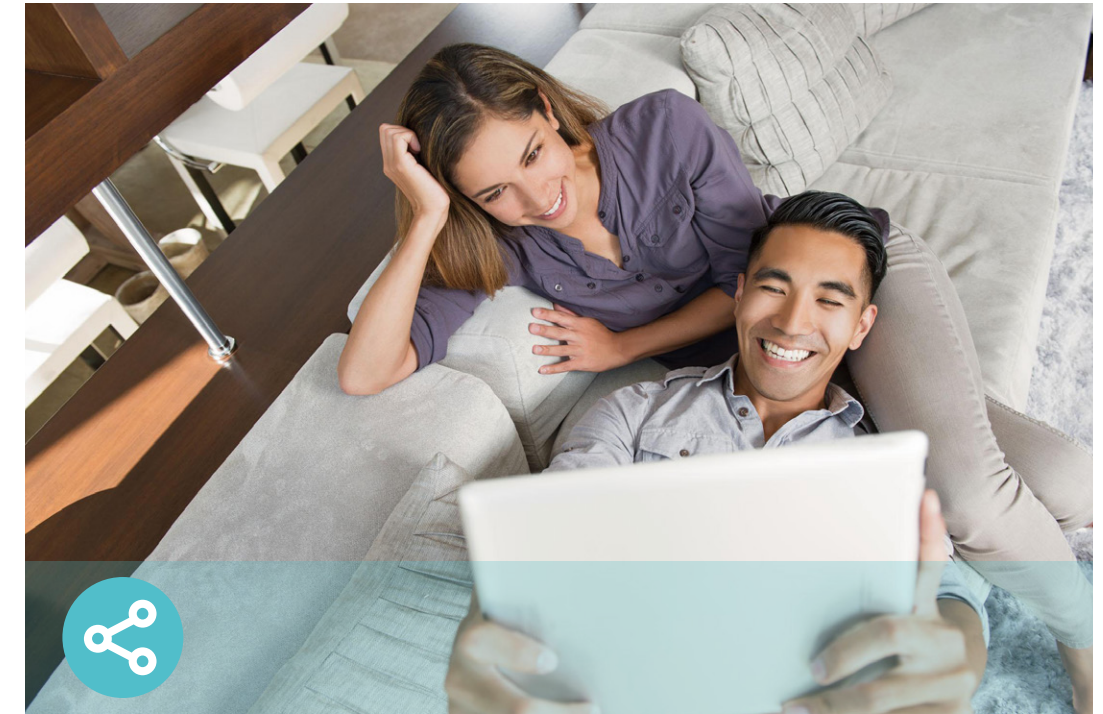
## Easy Management

- Intuitive Web UI – Ensures quick and simple installation without hassle
- Hassle-free Management with Tether App – Network management is made easy with the TP-Link Tether App, available on any Android or iOS device
- Remote Management with TP-Link ID – Manage your home network from your smartphone or tablet via a single TP-Link ID, no matter where you find yourself



## Security

- Guest Network – Keep your main network secure by creating a separate network for friends and visitors
- Access Control – Establish a whitelist or blacklist to allow or block certain devices from accessing the internet
- Parental Controls – Manage when and how connected devices can access the internet
- VPN Server – IPSec VPN is supported, making it easy to set up a secure connection between your private network and the internet



## Ease of Use

- Fast Connection – Connect wireless devices securely with the press of WPS button
- Easy On/Off – Turn On/Off power using the Power On/Off button
- Wireless Schedule – Wireless Schedule lets you turn the Wi-Fi radio on or off based on a preset timetable

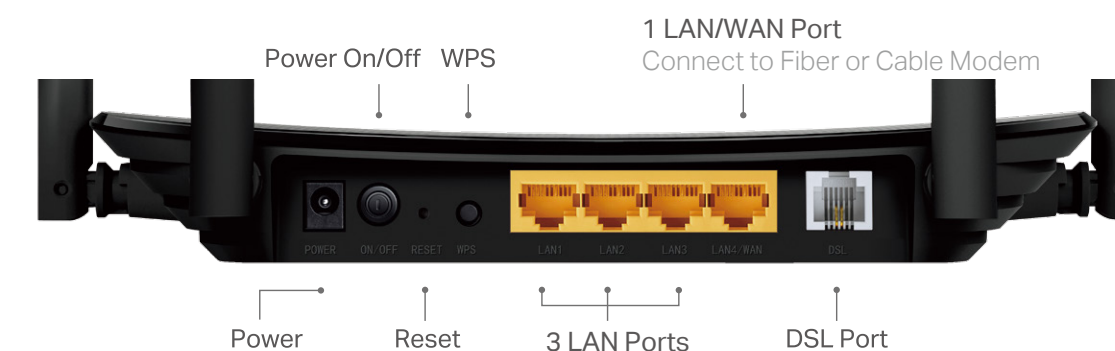
# Specifications

## Hardware

- Ethernet Ports: 3 10/100Mbps RJ45 LAN Ports, 1 10/100Mbps RJ45 WAN/LAN Port, 1 RJ11 Port
- Button: WPS Button, Reset Button, Power On/Off Button
- External Power Supply: 12V/1.0A
- Dimensions (W x D x H): 9.1 × 5.7 × 1.4 in (230 × 144 × 37 mm)
- IEEE Standards: IEEE 802.3, IEEE 802.3u, 802.3ab
- VDSL2 Standards: ITU G.993.2, Up to 30a profile (POTS)  
ITU-T G.993.5 (G.vector)  
ITU-T G.998.4 (G.INP)
- ADSL Standards: Full-rate ANSI T1.413 Issue 2,  
ITU-T G.992.1(G.DMT),  
ITU-T G.992.2(G.Lite),  
ITU-T G.994.1 (G.hs),
- ADSL2 Standards: ITU-T G.992.3 (G.DMT.bis),
- ADSL2+ Standards: ITU-T G.992.5
- Antenna Type: 4 x 5dBi Fixed Omni-Directional Antennas
- Antenna Gain: 4 x 5dBi for 2.4GHz and 4 x 5dBi for 5GHz

## Wireless

- Wireless Standards: IEEE 802.11ac/n/a 5GHz, IEEE 802.11b/g/n 2.4GHz
- Frequency: 2.4GHz and 5GHz
- Signal Rate: 867Mbps at 5GHz, 300Mbps at 2.4GHz
- Transmit Power: <20dBm (2.4GHz), <23dBm (5GHz)
- Wireless Function: Enable/Disable Wireless Radio, WDS Bridge, WMM, Wireless Statistics
- Wireless Security: 64/128-bit WEP, WPA/WPA2, WPA-PSK/WPA-PSK2 encryptions
- Wireless Schedule: Support 2.4GHz and 5GHz Wireless Schedule



# Specifications

## Software

- Operation Modes: VDSL/ADSL Modem Router, Wireless Router
- DHCP: Server, Client, DHCP Client List, Address Reservation, DHCP Relay
- Port Forwarding: Virtual Server, Port Triggering, DMZ, ALG, UPnP
- Dynamic DNS: DynDns, NO-IP, TP-Link
- VPN: IPsec VPN
- ATM/PPP Protocols: ATM Forum UNI3.1/4.0, PPP over ATM (RFC 2364), PPP over Ethernet (RFC2516), IPoA (RFC1577/2225), MERIPoE (RFC 1483 Routed), Bridge (RFC1483 Bridge), PVC – Up to 8 PVCs
- Security: NAT Firewall, SPI Firewall, Access Control, Service Filtering, Denial of Service (DoS), SYN Flooding, Ping of Death, IP and MAC Address Binding
- Advanced Functions: Parental Controls, Network Address Translation (NAT), Port Mapping (Grouping), Static Routing, RIP v1/v2 (optional), DNS Relay, DDNS, IGMP V1/V2/V3
- Management: Web Based Configuration (HTTP / HTTPS ), Remote management, Command Line Interface, SSL for TR-069, SNMP v1/2c, Firmware Upgrade, Diagnostic Tools, Free Online Firmware Update
- Guest Network: 2.4GHz guest network, 5GHz guest network
- IPsec VPN: Supports up to 10 IPsec VPN tunnels
- Protocols: Supports IPv4 and IPv6

## Others

- Certification: CE, RCM, RoHS
- System Requirements:
  - Microsoft Windows 98SE, NT, 2000, XP, Vista™ or Windows 7, 8, 8.1, 10, Mac OS, NetWare, UNIX or Linux
  - Internet Explorer 11, Firefox 12.0, Chrome 20.0, Safari 4.0, or other Java-enabled browser
  - Subscription with an internet service provider (for internet access)
- Environment
  - Operating Temperature: 0°C~40°C (32°F ~104°F)
  - Storage Temperature: -40°C~70°C (-40°F ~158°F)
  - Operating Humidity: 10%~90% non-condensing
  - Storage Humidity: 5%~90% non-condensing
- Package Contents
  - DSL Modem Router
  - External Splitter
  - RJ11 DSL Cable
  - RJ45 Ethernet Cable
  - Power Adapter
  - Quick Installation Guide



For more information, please visit

<http://www.tp-link.com/en/products/details/Archer-VR300.html>

or scan the QR code left

Attention: This device may only be used indoors in all EU member states and EFTA countries. Specifications are subject to change without notice. TP-Link is a registered trademark of TP-Link Technologies Co., Ltd. Other brands and product names are trademarks or registered trademarks of their respective holders. Copyright ©2017 TP-Link Technologies Co., Ltd. All rights reserved.

[www.tp-link.com](http://www.tp-link.com)

TP-Link AC1200 Wireless VDSL/ADSL Modem Router Archer VR300