

RG-RAP52-OD

Reyee Wi-Fi 5 AC1300

Access Point

DATASHEET



Highlights

- AC1300 Wave 2 Outdoor Mesh Mini-size AP For Villa & Retail
- Bracket or Poles, Flexible Installation to Fit Multi-Scene
- Weatherproof - Rated as IP65, Consistent Protection, Stable Signal
- Detachable Antennas, Cover where you need specially
- Reyee Mesh, Standalone Portal, AI Roaming, Optimized Features for Street Business

Highlight Features



Small But Make A Difference

AC1300 Wave 2 Outdoor Mesh
Mini-size AP for Villa & Retail

Flexible Installation to Fit Multi-Scene



Wall Mounting



Pole Mounting

Reliable Wi-Fi Performance and Superior Coverage for Your Business

AC1300 chip solution along with Enterprise-grade high-gain amplifiers and subtle design of antennas, make the whole device perform perfectly in coverage and quality Wi-Fi delivered.

5Ghz 867 Mbps

2.4Ghz 400 Mbps

2.4Ghz: 300m+

5Ghz: 400m+



Reyee Mesh



IP65



Detachable Antennas



Flex-installation



Cloud Management

Highlight Features

Refined Appearance

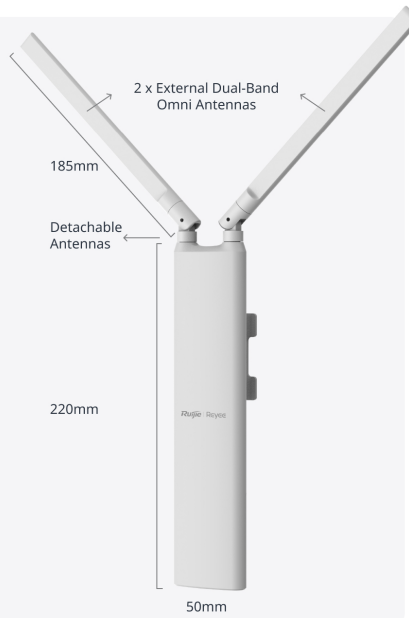
Incredibly Thin
Impressively Small

Adapt to Modern Life Change



60mm

200mm



185mm

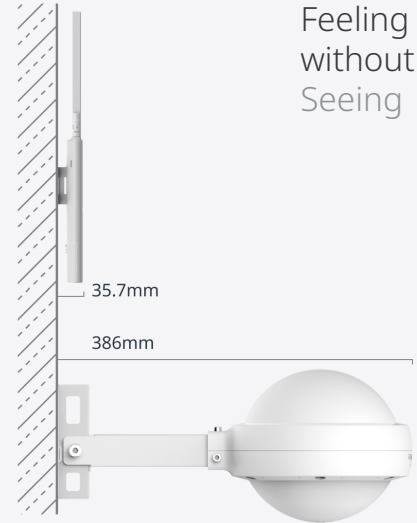
Detachable
Antennas

220mm

50mm

2 x External Dual-Band
Omni Antennas

Feeling
without
Seeing

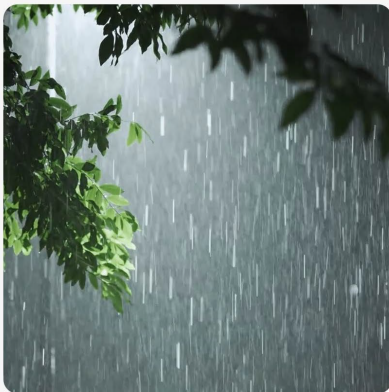


35.7mm

386mm

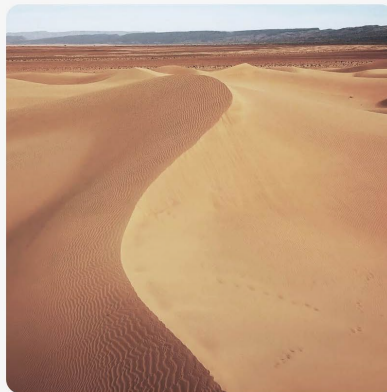
Consistent Protection, Stable Signal

Weatherproof - Rated as IP65 during Ingress Protection Testing



Raining-Proof

(Within A distance of 2.5 meters) strongly
sprayed by water with a flow rate of
12.5±0.625(L/min)



Dust-Proof

Highest Protection to prevent tiny dust into the
inside of device



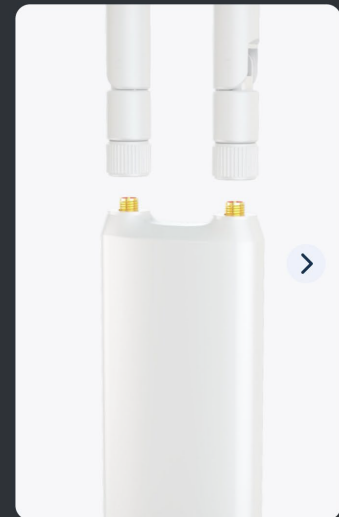
Surge-Protection

4KV Lightning Protection
15KV ESD Protection

Detachable Antennas (SMA Standard)

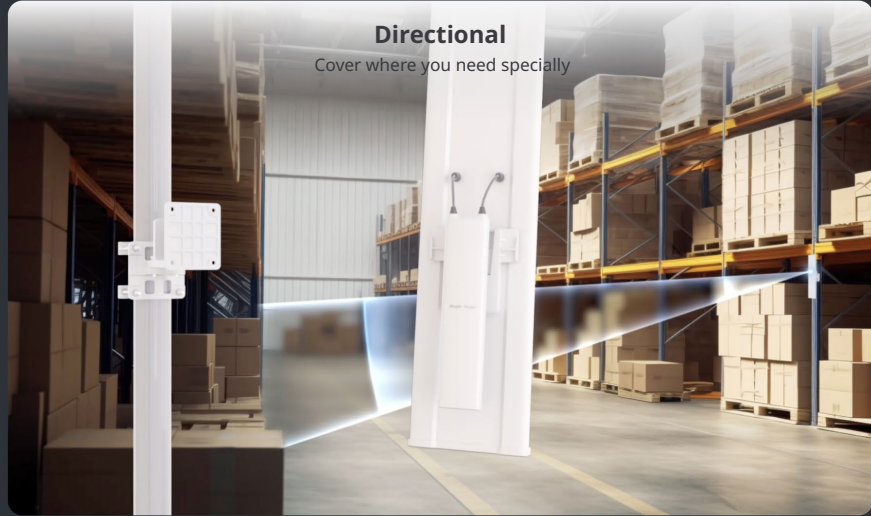
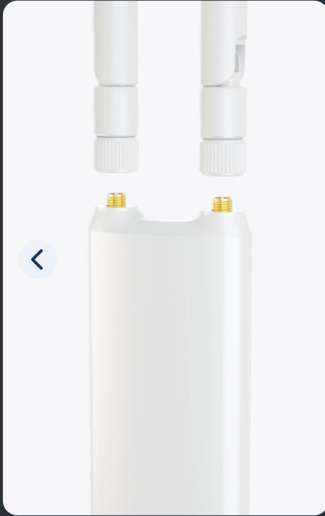
Omnidirectional

Wider Coverage of Service Area



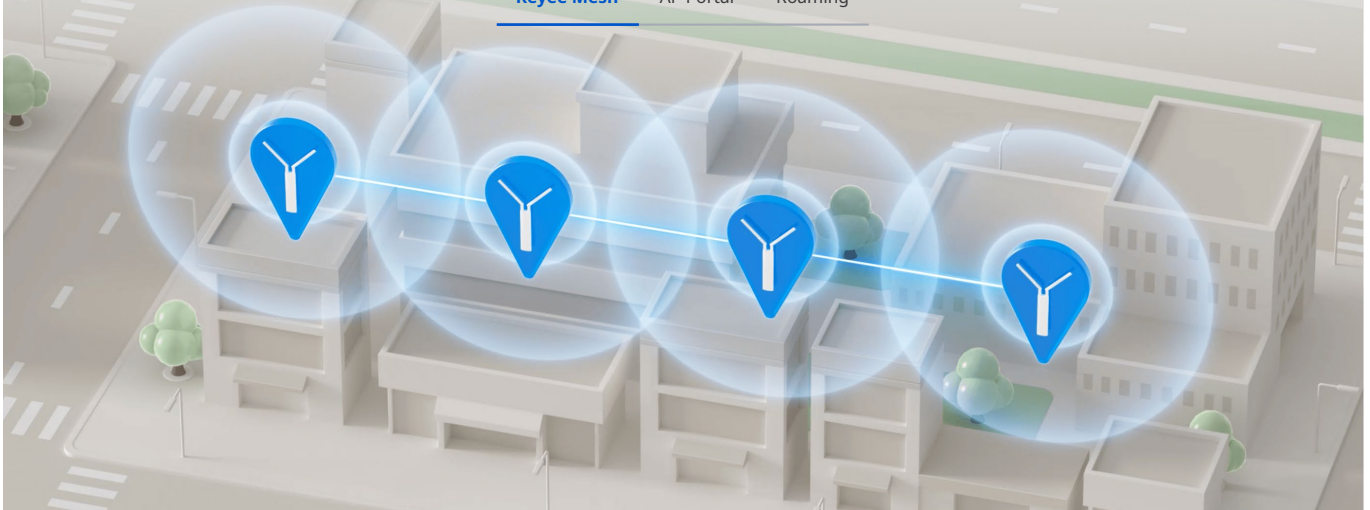
Highlight Features

Detachable Antennas (SMA Standard)



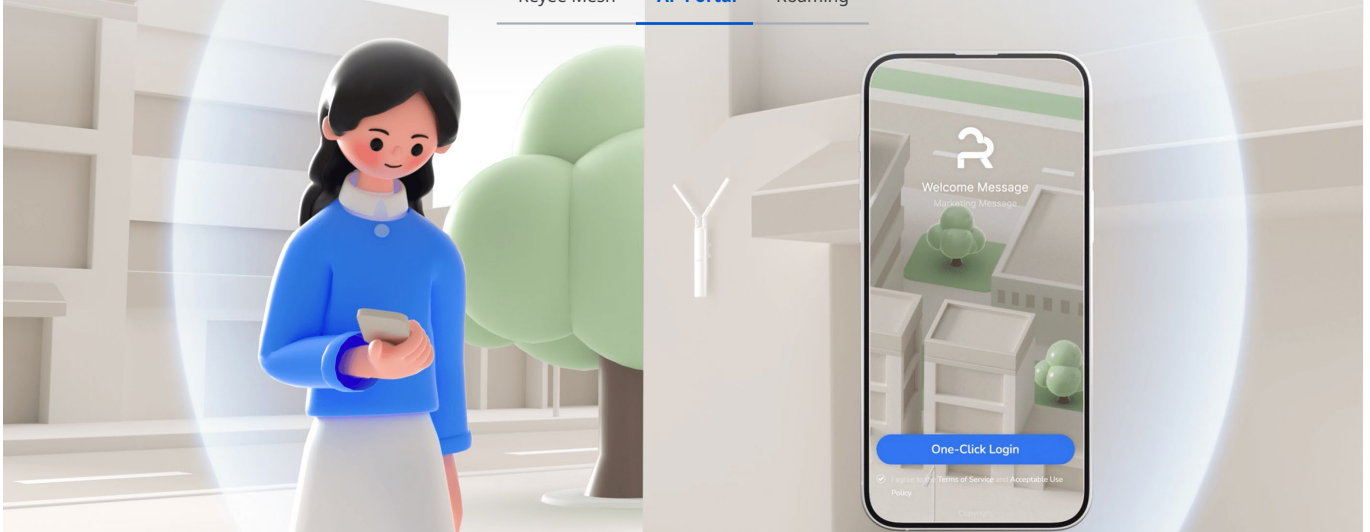
Optimized Features for Street Business

Reyee Mesh AP Portal Roaming



Optimized Features for Street Business

Reyee Mesh AP Portal Roaming

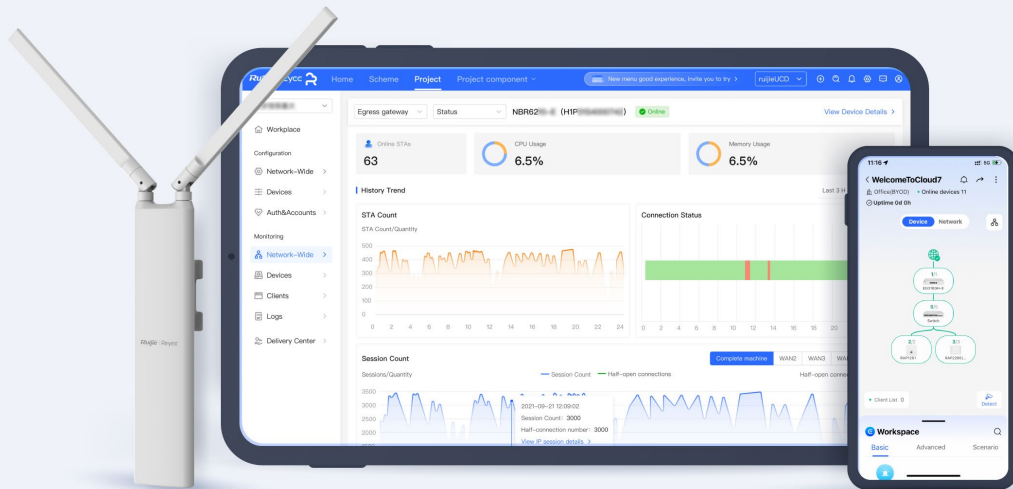


Highlight Features



Cloud, Make Your Business Easy

- Self-organizing network
- Centralized network management
- Cloud portal authentication
- Remote monitoring and maintenance



Specifications

Hardware Specifications

Wi-Fi Standards	Wi-Fi 5 (IEEE 802.11ac Wave 2) Wi-Fi 4 (IEEE 802.11n) IEEE 802.11a IEEE 802.11b/g
MIMO	2.4 GHz, 2×2 MIMO 5 GHz, 2×2 MIMO
Max. Data Rate	2.4 GHz: 400 Mbps 5 GHz: 867 Mbps
Max. Transmit Power	CE EIRP: 2.4 GHz to 2.4835 GHz ≤ 20 dBm 5.150 GHz to 5.350 GHz ≤ 23 dBm 5.470 GHz to 5.725 GHz ≤ 30 dBm Note: Country specific restrictions apply Myanmar: 2400 MHz - 2483.5 MHz ≤ 20 dBm 5150 MHz - 5350 MHz ≤ 23 dBm 5470 MHz - 5850 MHz ≤ 25 dBm Thailand: 2.4 GHz to 2.4835 GHz: 20 dBm 5.150 GHz to 5.350 GHz: 23 dBm 5.470 GHz to 5.725 GHz: 30 dBm 5.725 GHz to 5.825 GHz: 30 dBm
Max Throughput	Up to 400 Mbps at 2.4 GHz Up to 867 Mbps at 5 GHz 1.267 Gbps per AP
Dimensions	220 mm × 50 mm × 35.7 mm (8.66 in. × 1.97 in. × 1.41 in.) (excluding mounting bracket and antenna) antenna size: 185mm (7.24 in.)
Weight	Main Unit: ≤ 0.4 kg
Fixed Ports	1 × 10/100/1000 Base-T port
LEDs	1 × system LED
Power Supply	IEEE 802.3af standard PoE power supply 24 V passive PoE power supply

Specifications

Basic Features

Max. Power Consumption	≤ 14 W
Operating Temperature	-30°C to +70°C (-22°F to +158°F) Long-term operating temperature: -30°C ~ 65°C (-22°F ~ 149°F); tested short-term operating temperature (Less than 24 hours): 66°C ~ 70°C (150.8°F ~ 158°F)
Storage Temperature	-40°C to +75°C (-40°F to +167°F)
Operating Humidity	10% to 95% RH (non-condensing)
Storage Humidity	10% to 95% RH (non-condensing)
Installation	Wall mounting and pole mounting
EMC Compliance Standards	GB9254 EN301 489 EN55022 B9254-2008 EN301 489 EN55022 FCC Part15 RSS-210 EN50155 EN50121 NEBS GR-63-CORE_Issue3_2006
Shock and Vibration Compliance Standards	IEC 61373 NEBS GR-63-CORE_Issue3_2006 EN300 328 EN301 893 GB/T25119 EN50155(EN61373)
Radio Compliance Standards	EN300 328 EN301 893
IP (Ingress Protection) Rating	IP65
MTBF	> 400,000 hours
Software Features	
Operating Mode	AP mode and routing mode

Specifications

Software Features

WLAN	Maximum number of clients: 110
	Recommended number of clients: 96
	Up to 8 SSIDs
	Support SSID hiding Configuring the authentication mode encryption mechanism VLAN attributes for each SSID
	SSID-based and radio-based STA limit
	Support Layer 2 user isolation
KV Roaming	✓
Layer 2 Roaming	✓
Layer 3 Roaming	✓
Security	Support PSK authentication
	Support Black List / White List: Maximum 256 rules per SSID Maximum 1024 rules per AP
	Support WPA (TKIP), WPA2 (AES), and WPA-PSK data encryption
	Standalone Portal
Routing	Support static IP address, DHCP, PPPoE Dial Up
Management and maintenance	Support unified networking of all network equipment Support local or remote management with Ruijie Cloud app Support local management with web Support remote management with Ruijie Cloud platform
Platform management features	WIO2.0, Automatic RF adjustment via the platform
	Unified configuration via the platform
	Unified monitoring via the platform
AP Mesh	Mesh management
	Reyee Mesh

Ordering Information

No.	Item	Quantity
1	RG-RAP52-OD Access Point	1
2	Antenna	2
3	Band Clamp	2
4	Mounting Bracket	1
5	Screw Kit (Containing Two 3.5 mm × 25 mm Expansion Screws and Two Wall Anchors)	1
6	Warranty Card	1
7	Quick Installation Guide	1

Ruijie | Rcycc

 **Redefine your easy network**

Copyright ©2000-2023 Ruijie Networks Co., Ltd. All rights reserved.

No part of this document may be reproduced or transmitted in any form or any means without prior written consent of Ruijie Networks Co., Ltd.

Notice

This content is applicable only to regions outside the China mainland. Ruijie Networks Co., Ltd. reserves the right to interpret this content.

The information contained herein is subject to change without notice. Nothing herein should be construed as constituting an additional warranty. Ruijie Networks Co., Ltd. shall not be liable for technical or editorial errors or omissions contained herein.



Ruijie Networks Co., Ltd.
Building 19, Juyuanzhou Industrial Park, No.618 Jinshan
Road, Cangshan District, Fuzhou, Fujian, China
Website: <https://www.ruijienetworks.com>