

# PRESS RELEASE

Tuesday 30th April 2024

## Powertec Wireless Technology launches Next Generation National Coverage Model

FOR IMMEDIATE RELEASE

[Gold Coast 30/04/2024] - Today, Powertec Wireless Technology (Powertec) introduces the National Coverage Model (NCM), a groundbreaking cloud-based platform used to analyse the coverage and performance of Australia's 4G and 5G networks.

Empowering technology professionals with insights never before available, NCM revolutionises the way cellular technologies can be deployed and optimised.

The platform is the first of its kind. It provides a true, high-resolution snapshot of Telstra, Optus, and Vodafone 4G-5G networks across the entire country and out to sea. With an intuitive and familiar interface, users can check and compare mobile coverage for any location in the country with unparalleled accuracy.

NCM enables technology professionals to plan, deploy, and optimise wireless solutions reliant on 4G and 5G connectivity right from their web browser. For consultants and property developers, the platform provides indispensable insights into the availability and speed of 4G-5G mobile networks, whether the task is understanding mobile coverage of a new subdivision, drone BVLOS flight planning, or identifying blackspots along a traffic corridor.



Address  
Velocity Village Campsite, 570 King Way, Karratha, Western Australia, 6714  
Query Data Zoom to

# PRESS RELEASE

Tuesday 30th April 2024

## **The NCM offers a comprehensive suite of features, including:**

- Coverage checking: type in an address or GPS coordinates to check the availability of Telstra, Optus, and Vodafone 4G-5G at that location.
- Signal Strength Prediction: obtain a signal level estimate (RSRP), based on real-world data, with a single click.
- Mobile data speed prediction: understand the performance capabilities of the 4G-5G network, and how data speed is impacted by terrain, vegetation, and buildings between you and the tower.
- Identify best and alternative serving cell towers: understand which tower is providing signal to a location, along with alternatives for effective emergency outage and disaster planning scenarios.
- Elevation profile, distance, and direction to serving cell: plan your technology deployment with detailed information on terrain and distances, and optimal antenna height and azimuth for aiming equipment at the tower.
- Report preparation: extensive graphical mapping features allow for the easy generation of connectivity reports, including ability to assess sites in bulk.



Address  
Velocity Village Campsite, 570 King Way, Karratha Ind  
Karratha, Western Australia, 6714  
Query Data Zoom to

# PRESS RELEASE

Tuesday 30th April 2024

“The Powertec team are proud to be building technologies that help change the way our nation connects. Australia is an incredibly big place. The connectivity challenges that our remote communities face can be vastly different to those in dense urban areas, and different still to those working in construction and mining projects. But before we can fix any problem, we first must understand it.”, said Doug Pukallus, Chief Technical Officer at Powertec.

“It has been an absolute privilege to develop the NCM. I am excited to see how our valued partners put it to use in both solving our country’s connectivity challenges and developing new technologies from its insights.”

Discover how the National Coverage Model can transform your business by visiting the website at <https://coverage.powertec.com.au>

## **About Powertec Wireless Technology:**

Since its inception in 1995, Powertec Wireless Technology has established itself as a leading player in connectivity, offering clients the best solutions for their communications requirements. Powertec is a leading provider of connectivity solutions to mobile network operators, private enterprise, government departments, defense and emergency services.

Powertec Wireless communication products and solutions make a difference by ensuring clients can communicate and be connected no matter where they may be.

For more information about Powertec Wireless Technology please visit [www.powertec.com.au](http://www.powertec.com.au)

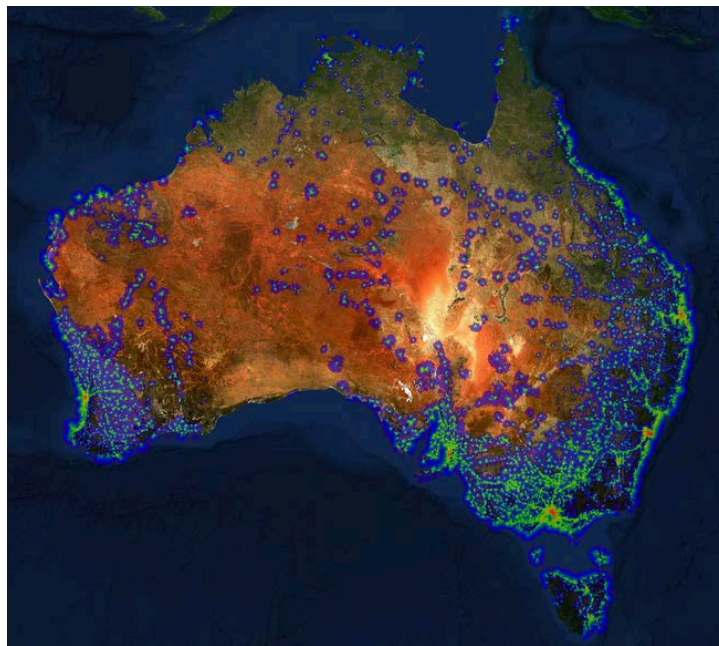
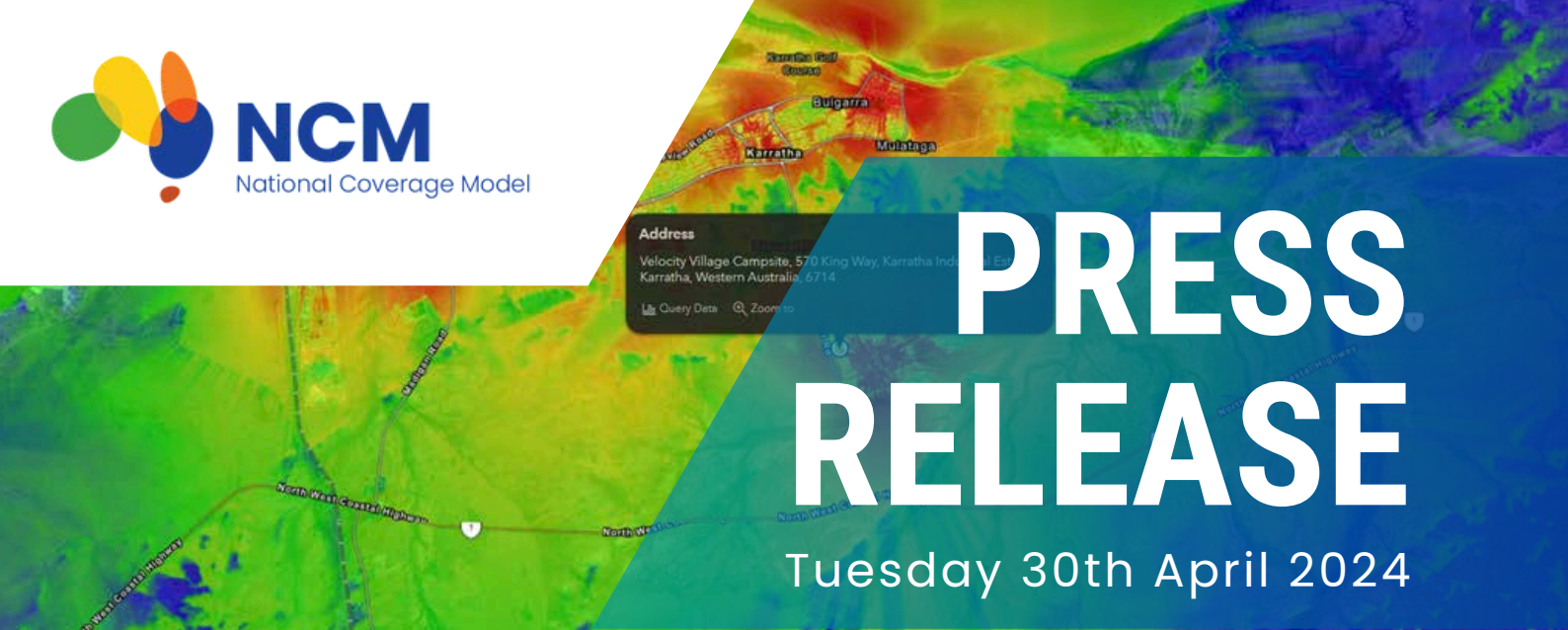
## **Media Contact:**

Richard Unwin

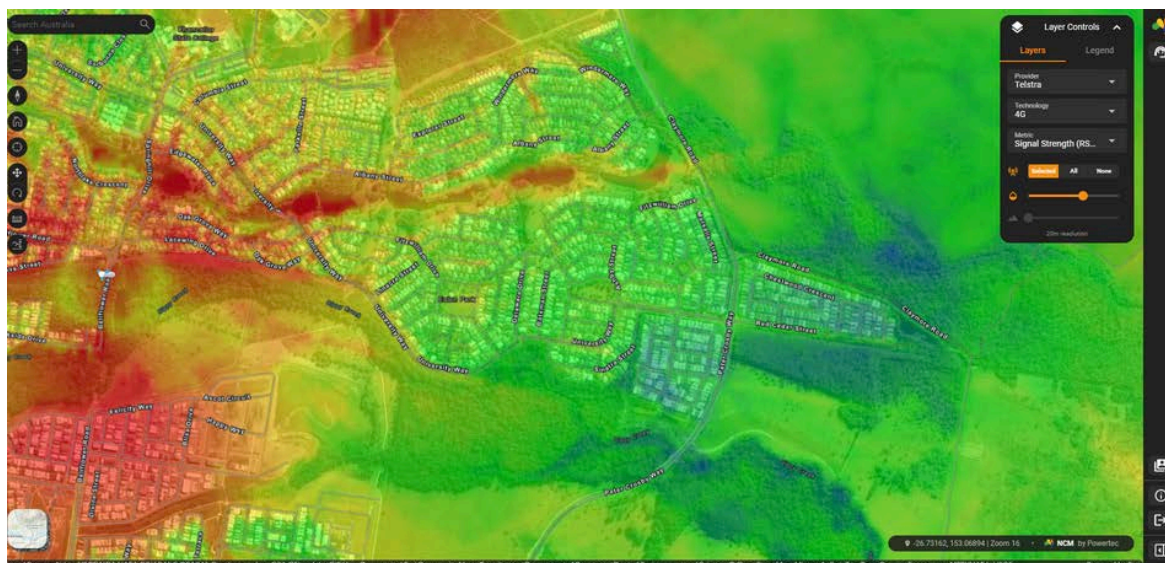
Head of Marketing, Powertec Wireless Technology

[richard.unwin@powertec.com.au](mailto:richard.unwin@powertec.com.au)





National LTE



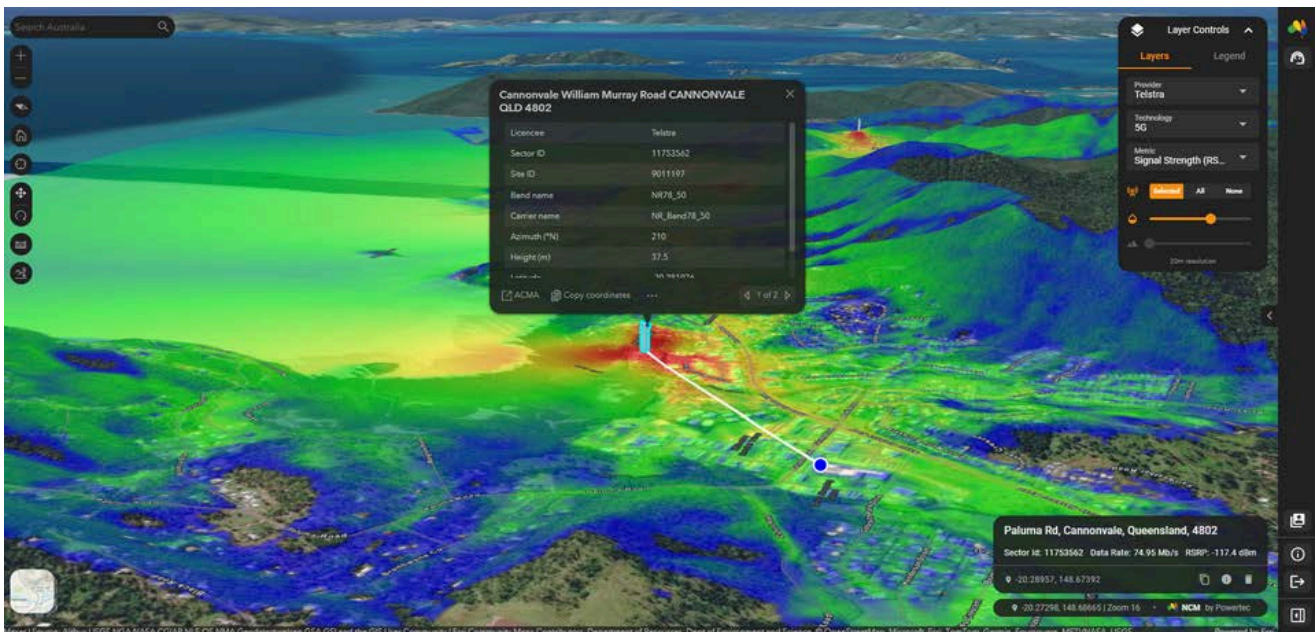
Queensland Neighbourhood With Bad Mobile Coverage



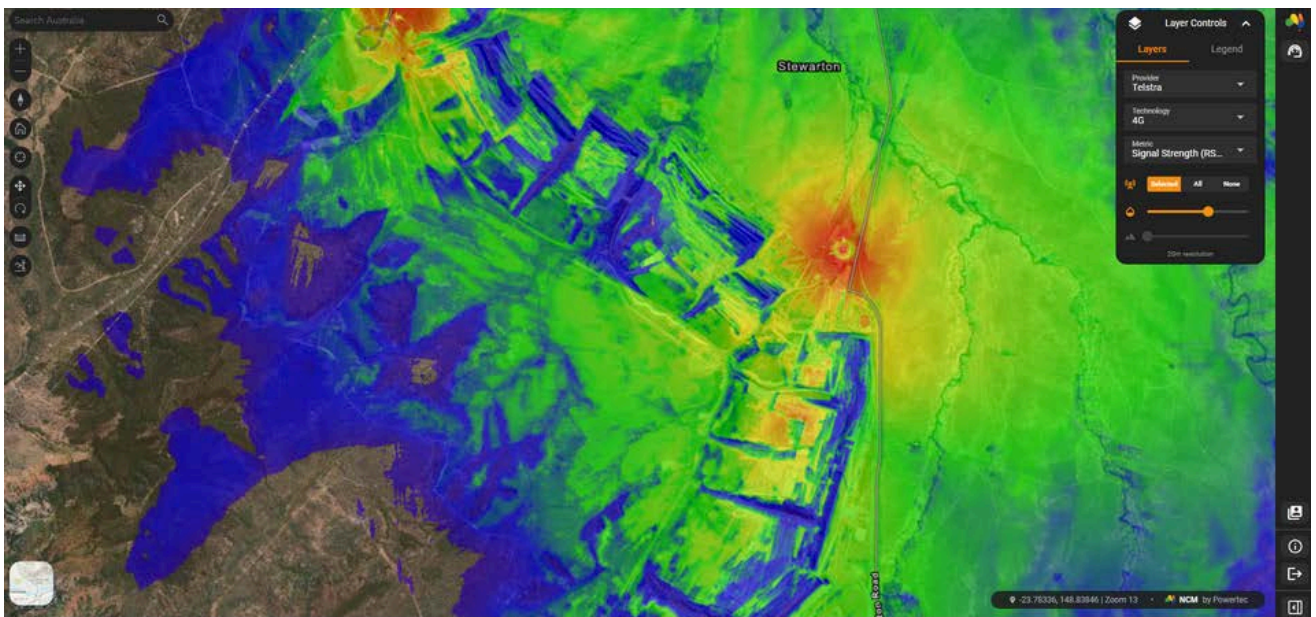


# PRESS RELEASE

Tuesday 30th April 2024



3D View Path Profile Telstra 5G



Mine Site Poor Coverage