

Electrical Specifications

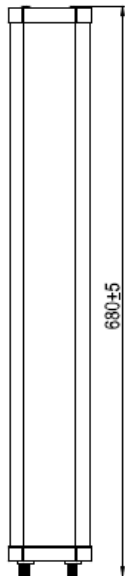
• Frequency Range	2.4 – 2.5 GHz
• Gain	14 dBi
• Polarization	Dual Slant $\pm 45^\circ$
• Horizontal Beamwidth	70° (-3 dB)
• Vertical Beamwidth	12° (-3 dB)
• VSWR	2 (Max.)
• Front-to-back Ratio	-25 dB (Max.)
• Isolation	20 dB (Min.)
• Impedance	50 Ω
• Power Handling	10 W (cw)
• Lightning Protection	DC Ground

Environmental and Mechanical Specifications

• Temperature	-40 °C to +60 °C
• Wind Loading	Up to 216 km/h (134 mph)
• Radome Color	Gray
• Radome Material	ABS, UV Resistant
• Weight	1.085 kg
• Dimensions	680 x 112 mm
• Connector	2 x N-female
• Pole Diameter	$\varnothing 30$ to 70 mm
• Mechanical Downtilt	$\pm 30^\circ$ (Max.)

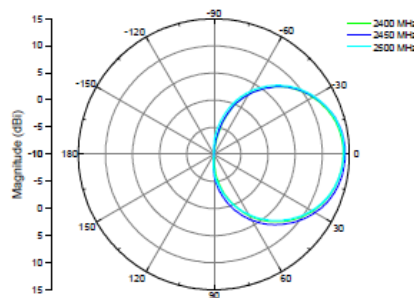


Drawing Diagram

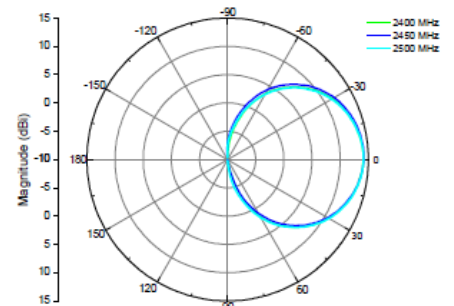


Antenna Patterns

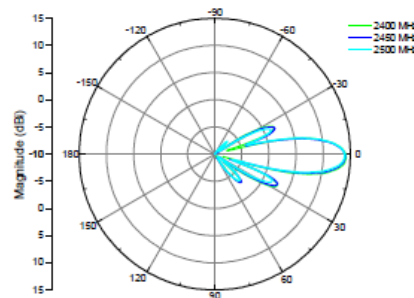
H-plane Co-polarization, Port 1



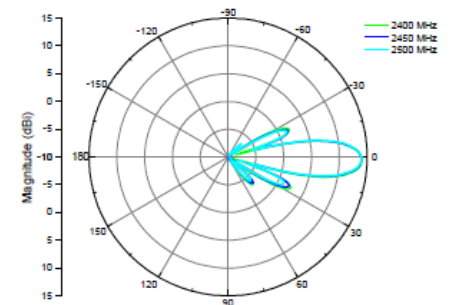
H-plane Co-polarization, Port 2



V-plane Co-polarization, Port 1



V-plane Co-polarization, Port 2



Product Ordering Information

- 2.4 GHz, 14 dBi X-pol Directional Antenna (Part No.: SP.AN-2S14-00)

Contact Us

- Email: sales@altaitكنولوجий.com

Although Altai has attempted to provide accurate information in these materials, Altai assumes no legal liability for the accuracy and completeness of the information. All specifications are subject to change without notice.